



Above glass awning

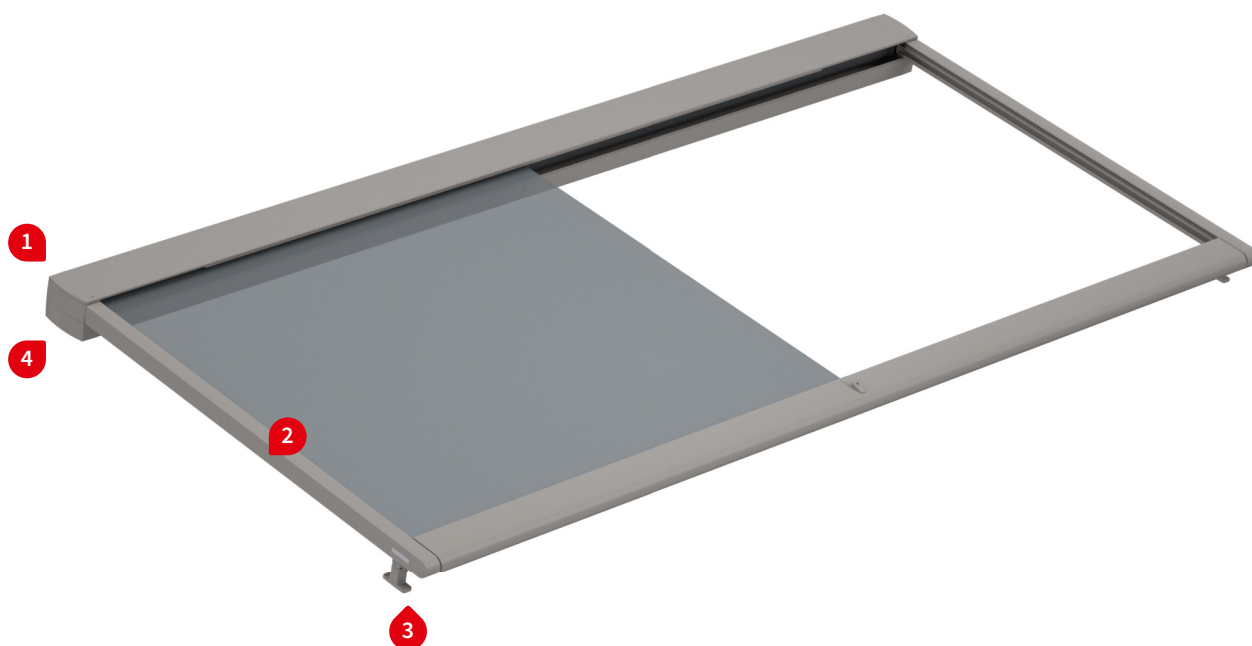
markilux 7800 / 7800 tracfix

Classic, angular cassette design in combination with proven technology – offering shade over a very large area.

Product Characteristics

Wind resistance class 3

Beaufort 6 → 38–48 km/h → 10.5–13.4 m/s → 24–30 mph

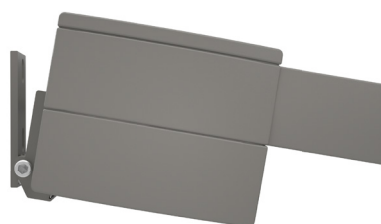


12

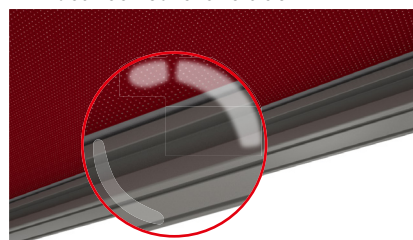
1 bottom fixture



1 face fixture



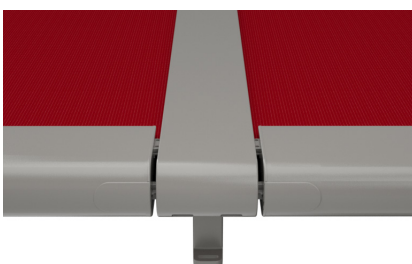
2 tracfix cover guidance – no gap between cover and track ¹⁾



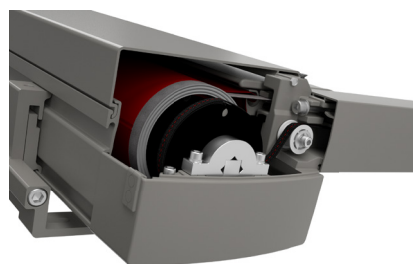
3 when extended, the front profile finishes flush with the end of the guide tracks



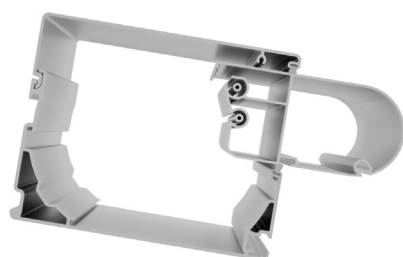
3 coupling track



4 maintenance opening in the cassette



4 awning retracted, all round cover protection



1) Optional accessories

Product Characteristics

Description

- exterior awning for conservatories, glass canopies and large skylights
- the ingenious tensioning system and the sturdy design allow areas of up to 36 m² to be shaded by one awning (with tracfix system 30 m²) – up to 5 awnings can be coupled together

Special features

- fully encompassing cassette that protects the cover perfectly
- the awning cover is bonded with stabilising vertical panel joints – in the case of the series sunvas, sunsilk, sunbow and perla FR the standard panel width is 60 cm (perfortex 120 cm / Soltis Perform 92 88,5 cm / transolair 84 cm) – in order to achieve the optimum overall cover tension and stability
- tracfix optional: the continuous lateral cover guidance system that leaves no gap between the cover and guide tracks – gives improved wind stability and a cleaner appearance
- option of a silentec motor – motor noise is appreciably reduced
- tried-and-tested tensioning system with drive belts and integrated gas pistons – delivers optimum cover tension – in any phase of extension
- the broad range of brackets with patented clip-on system offers individual fixture solutions
- can be combined with vertical cassette markilux 776 / 620 tracfix / 625 tracfix

Dimensions

- single unit: 60–700 cm in width, maximum extension 700 cm (depending on the width)
- maximum dimensions, width × extension: 500 × 700 cm / 550 × 650 cm / 600 × 600 cm / 650 × 500 cm / 700 × 450 cm (without tracfix system)
- maximum dimensions, width × extension: 500 × 600 cm / 550 × 500 cm / 600 × 450 cm (with tracfix system)
- intermediate sizes are available

Roller tube and lateral bearings

- round roller tube Ø 95 mm with keyway, galvanised steel – excellent stability, ensures near perfect cover performance even at the largest widths
- the roller tube bearing is made of die-cast aluminium

Awning profiles

- extruded aluminium, in facade quality, powder coated
- cassette profile in two pieces, angular, height × depth 200 mm × 160 mm
- guide tracks angular, width × height 60 mm × 70 mm (coupled unit 116 × 70 mm)
- front profile rounded at the front, depth × height 150 mm × 70 mm

End caps

- in order to achieve the optimum overall cover tension and stability
- the maintenance covers on the cassette are made of die-cast aluminium, powder coated
- the front profile end caps are made of high-quality plastic, powder coated

Fixture brackets

- extruded aluminium, powder coated
- cassette brackets: bottom fixture, face fixture, top fixture
- brackets for the guide tracks: stand-off brackets for bottom fixture, lateral fixture, reveal fixture
- standard bracket heights: 100 mm / 140 mm / 100–500 mm (bespoke heights can be ordered)
- track-only fixture of the awning is possible up to a fixture width of 600 cm without any housing support
- other accessories are available

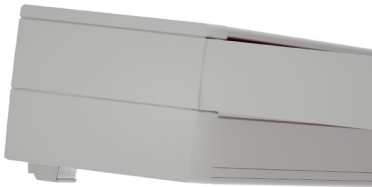
01 **Frame colours**

02 **markilux frame colours without surcharge**

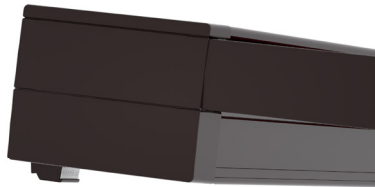
03 traffic white, RAL 9016



metallic aluminium, RAL 9006



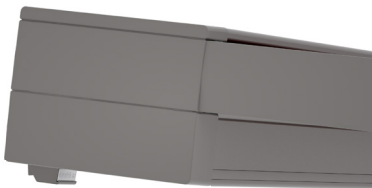
grey brown, similar to RAL 8019



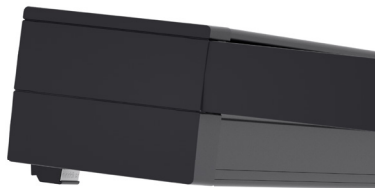
07 off-white textured finish, 5233 ¹⁾



stone grey metallic, 5215 ¹⁾

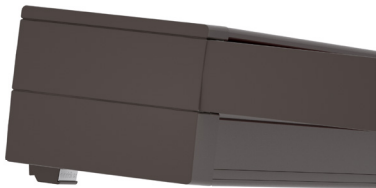


anthracite metallic, 5204 ¹⁾



11

12 havana brown textured finish, 5229 ¹⁾



17 **Non-standard powder-coated finish**

18 Bespoke frame colours incur a surcharge – matt, metallic, finely textured and pearl finishes as well as other colour ranges (DB, Tiger etc.) on request. All frame colours are available at a surcharge with enhanced corrosion protection.

19 Colours may differ slightly from those depicted in both hue and finish.

20

¹⁾ textured finish

Dimensions and configuration options

Single unit

Order dimensions	Awning fixture width												Minimum fixture width	
	150	200	250	300	350	400	450	500 ¹⁾	550 ¹⁾	600 ¹⁾	650 ¹⁾	700 ¹⁾	Hardwired motor	Radio-controlled motor
	60 150	151 200	201 250	251 300	301 350	351 400	401 450	451 500	501 550	551 600	601 650	651 700		
Overall width	+ 10												60 [73]	68 [81]
H	150													
	200													
	250													
	300													
	350													
	400 ²⁾		
	450 ²⁾		
	500 ²⁾		
	550 ²⁾	—		
	600 ²⁾	—		
	650 ²⁾	—	—	—		
	700 ²⁾	—	—	—	—		

Dimensions in cm

1) = depending on the fixture method, a central angled support bracket is necessary for a cover support tube from a width of 451 cm

2) = from an extension of 401 cm an additional track bracket per track is required

• = 1 cover support tube, if unit is without tracfix

.. = 2 cover support tubes, if unit is without tracfix

[...]= dimensions in the case of tracfix units

H = projection

 = tracfix (optional)

 = tracfix not available

Operation	standard	optional
crank handle	—	—
hard-wired motor	✓	—
silentec motor (optionally with an external io receiver)	—	✓
radio-controlled motor io, 868MHz	—	✓
radio-controlled motor RTS, 433MHz	—	✓

Coupled awnings

2–5 fields, 1 motor per field

alternatively 2 fields 1 motor / 3 fields 2 motors / 4 fields 2 motors

maximum size per field: see “single unit” dimensions

General notes

Different field extensions are available in a coupled awning.

The rolling up behaviour of the covers may vary in coupled awnings that have different field sizes.

This does not effect the functionality of the awning or shorten the service life of the covers.

Awning cover	fabric pattern no.	standard	optional
sunvas ^{1) 6)}	300..–315..	✓	—
sunsilk ^{1) 6)}	324.. / 328.. / 369..	✓	—
sunbow ^{1) 6)}	411..–427..	✓	—
smart art ¹⁾	340..	—	✓
perla FR ^{1) 5)}	371.. / 372..	—	✓
perfotex ²⁾	331.. / 332..	✓	—
transolair ³⁾	338..	—	✓
transolair (120 cm) ¹⁾	339..	—	✓
Soltis Perform 92 ⁴⁾	92–..	—	✓

Standard fabric panel widths

1) 60 cm 2) 120 cm 3) 84 cm

4) 88,5 cm 5) Only in tracfix units

6) In the case of striped patterns, a symmetrical pattern repeat at every second seam is not possible.

Shadeplus

not available

Optional accessories

tracfix – cover guidance system holding the cover neatly in the guide rails

storm safety clip for the cassette

wall sealing profile

several motors in a coupled awning, can be operated independently

automatic controls (light, wind, rain)

N.B. Important background information can be found in the chapter “Optional Accessories”

Dimensions and configuration options

Coupled unit, 2 fields ⁴⁾

		Awning fixture width									
		500 ³⁾	600 ³⁾	700 ³⁾	800	900	1000	1100	1200	1300	1400
Order dimensions		401	501	601	701	801	901	1001	1101	1201	1301
		500	600	700	800	900	1000	1100	1200	1300	1400
Overall width		+ 10									
H	150										
	200										
	250										
	300										
	350										
	400
	450
	500	—
	550	—	—
	600	—	—
	650	—	—	—
	700	—	—	—	—

12

Coupled unit, 3 fields ⁴⁾

		Awning fixture width															
		600 ³⁾	700 ³⁾	800	900	1000	1100	1200	1300	1400	1500	1600	1700	1800	1900	2000	2100
Order dimensions		551	601	701	801	901	1001	1101	1201	1301	1401	1501	1601	1701	1801	1901	2001
		600	700	800	900	1000	1100	1200	1300	1400	1500	1600	1700	1800	1900	2000	2100
Overall width		+ 10															
H	150																
	200																
	250																
	300																
	350																
	400
	450
	500 ²⁾	—
	550	—	—	—
	600	—	—	—
	650 ¹⁾	—	—	—	—
	700	—	—	—	—	—	—

1) = maximum fixture width of 1650 cm

2) = maximum fixture width of 1950 cm

3) = the cassette will be supplied in one piece as standard. If, for transportation or installation reasons, the cassette needs to be split, please note this explicitly when ordering.

4) = maximum field dimensions: see dimension overview for a single unit

• = 1 cover support tube, if unit is without tracfix

.. = 2 cover support tubes, if unit is without tracfix

H = order dimension = extension

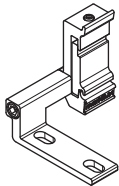
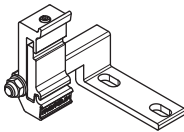
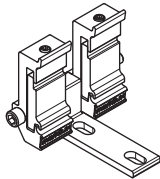
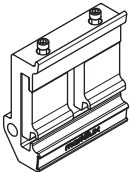


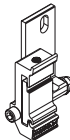
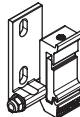
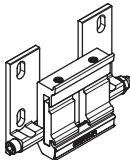
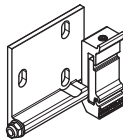
 = tracfix (optional)

 = tracfix not available

dimensions in cm

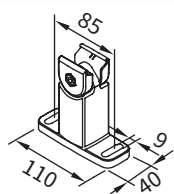
Fixtures, fittings and accessories

Bottom fixture brackets, cassette

 <p>bottom fixture left</p> <p>60557.</p>	 <p>bottom fixture right</p> <p>60558.</p>	 <p>coupling bracket cassette bottom fixture</p> <p>60572.</p>
 <p>coupling bracket cassette for track fixture</p> <p>60602.</p>	 <p>raised cassette bracket left</p> <p>60605.</p>	 <p>raised cassette bracket right</p> <p>60606.</p>
 <p>raised cassette bracket coupling</p> <p>60607.</p>	 <p>face fixture bracket left</p> <p>pitch adjustment range 0°–35°</p> <p>60569.</p>	 <p>face fixture bracket right</p> <p>pitch adjustment range 0°–35°</p> <p>60570.</p>
 <p>coupling bracket cassette wall</p> <p>pitch adjustment range 0°–35°</p> <p>60575.</p>	 <p>face fixture wide left</p> <p>pitch adjustment range 0°–35°</p> <p>60615.</p>	 <p>face fixture wide right</p> <p>pitch adjustment range 0°–35°</p> <p>60616.</p>

Fixtures, fittings and accessories

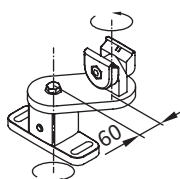
Track bracket



track bracket, with adjustable head

100 mm

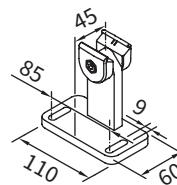
76046.



windmill track bracket

100 mm

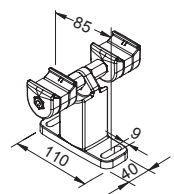
76054.



track bracket with offset footplate

100 mm

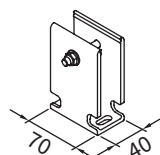
76199.



double track bracket with adjustable head

100 mm

76191.



track bracket for track-only fixture, rigid

100 mm

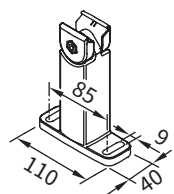
76017.



track bracket for track-only fixture, rigid by the metre, undrilled, 100 mm

maximum length 6 mm

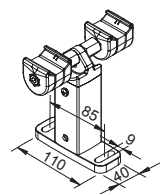
76013.



track bracket, with adjustable head

140 mm

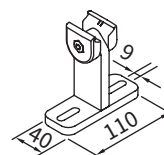
76048.



double track bracket with adjustable head

140 mm

76192.



track bracket for conservatory transom fixture

100 mm

76055.



track bracket, with adjustable head

140–500 mm

76047.



track bracket, with adjustable head and foot

200–500 mm

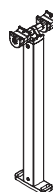
76045.



universal track bracket with adjustable head

140–500 mm

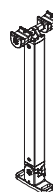
76053.



double track bracket with adjustable head

140–500 mm

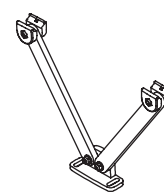
76193.



double track bracket with adjustable head and foot

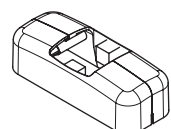
200–500 mm

76194.



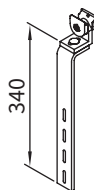
vario-V bracket for track fixture

76052.



covering cap for square track bracket
standard accessory for bracket

2 × 76718.



flat track bracket with adjustable head

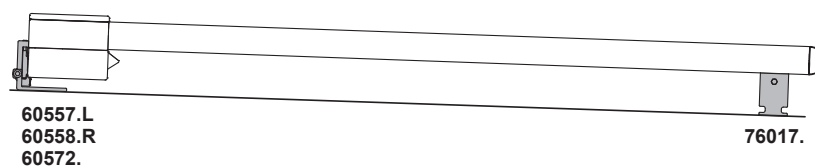
for lateral guide track fixture

76049.

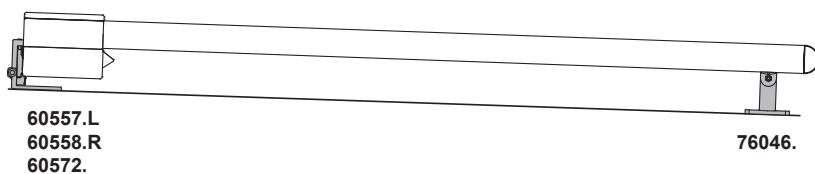
Fixture types

Bottom fixture

11



14

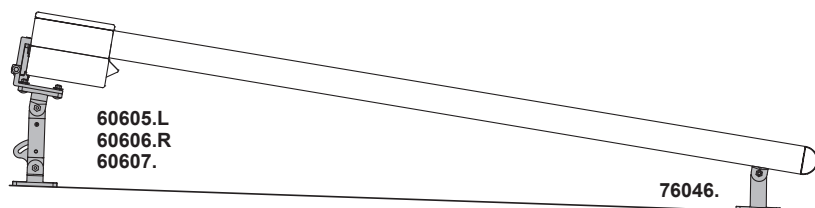


21



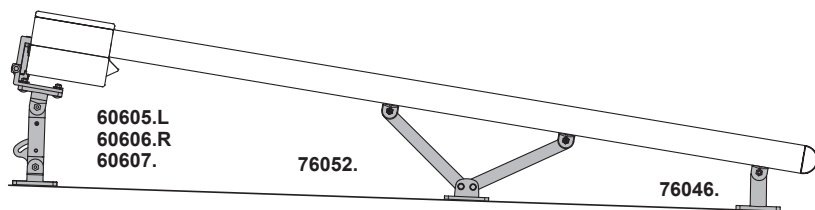
61

Up to an extension
of 400 cm



81

From an extension
of 401 cm



Individual bracket selection:

See "Fixtures, fittings and accessories".

Bottom fixture

Awning extension > 400 cm, always 2 brackets per guide track.

Fixture types

Track-only fixture

31



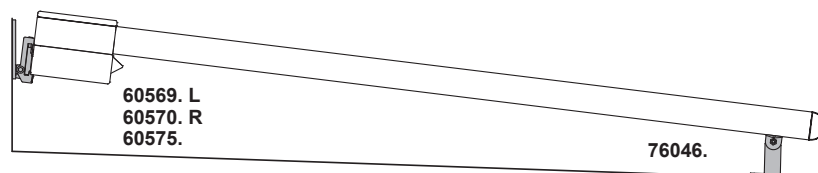
32



Face fixture

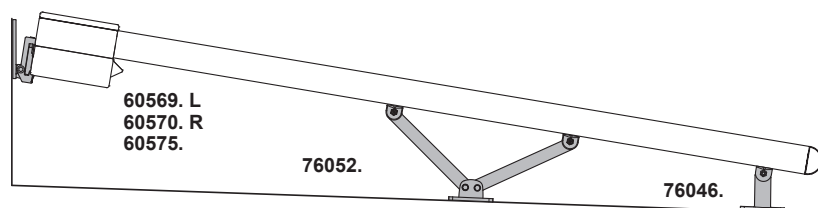
12

Up to an extension
of 400 cm



51

From an extension
of 400 cm



22



Individual bracket selection:

see "Fixtures, fittings and accessories".

Track-only fixture

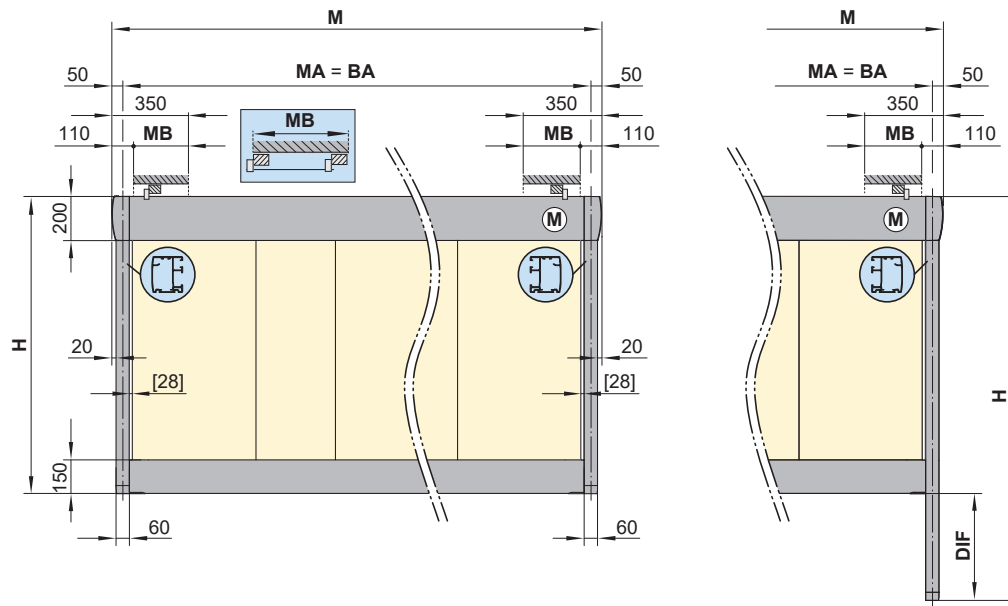
Not recommended with a coupled awning.

In the case of raised brackets > 140 mm, always 3 brackets per guide track, regardless of the extension.

Face fixture

Awning extension > 400 cm, always 2 brackets per guide track.

Guide track variant, asymmetrical lengths

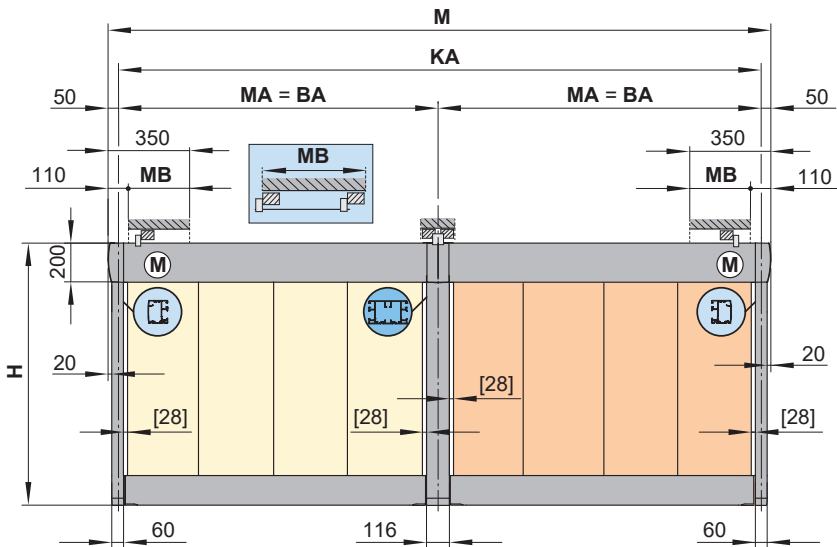
[illegible]

M = overall blind width = **MA** + 100 mm
MA = **order dimension** = awning fixture width = fixture width
MB = bracket fixture range
(M) = motor

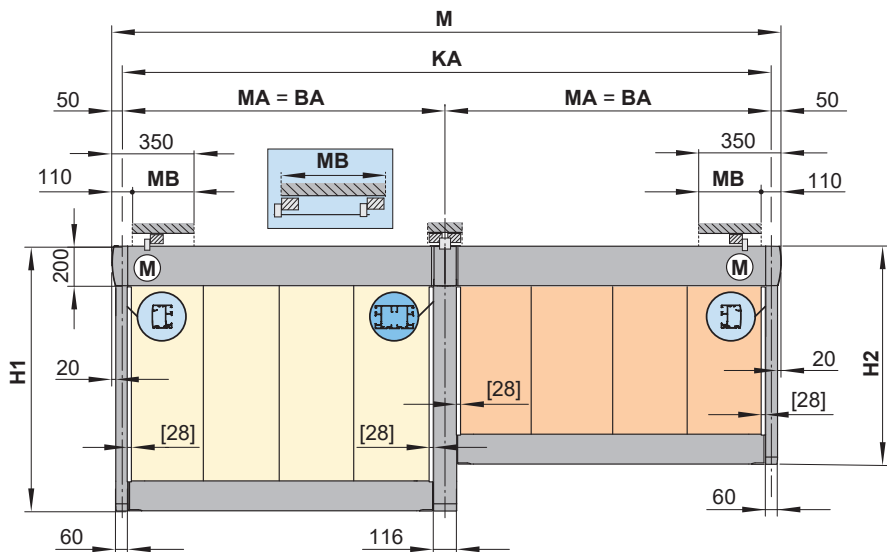
markilux.com

Overview of dimensions

Coupled unit, 2 fields, 2 motors



Coupled unit, 2 fields, 2 motors, asymmetrical guide track extensions

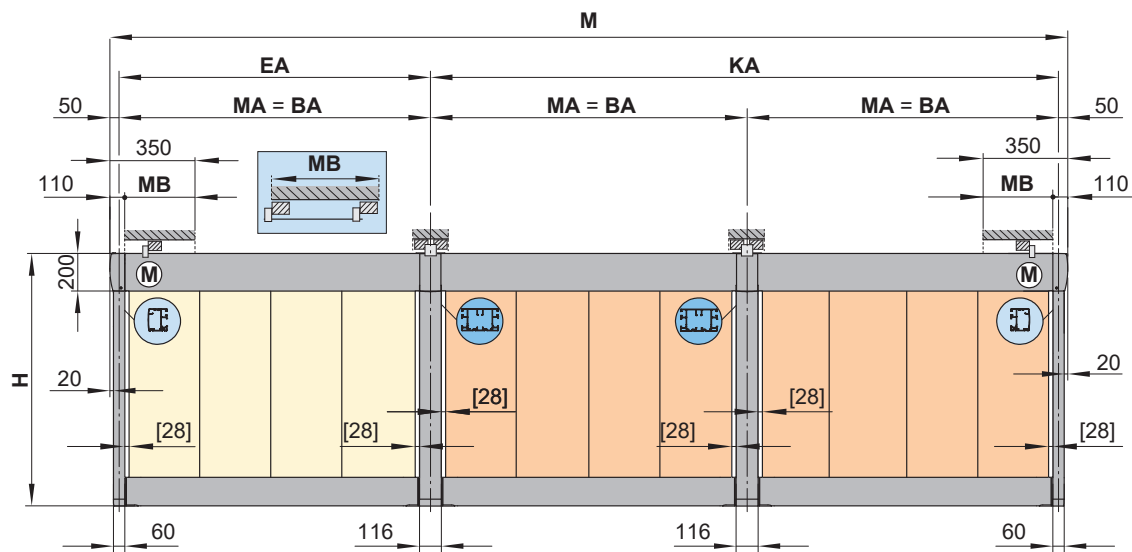


- [...] = dimensions of the cover gap in a standard unit, no cover gap in units with tracfix system
- BA = width between fixture points
- DIF = difference in measurement
- H = **order dimension** = projection
- H1 = projection long

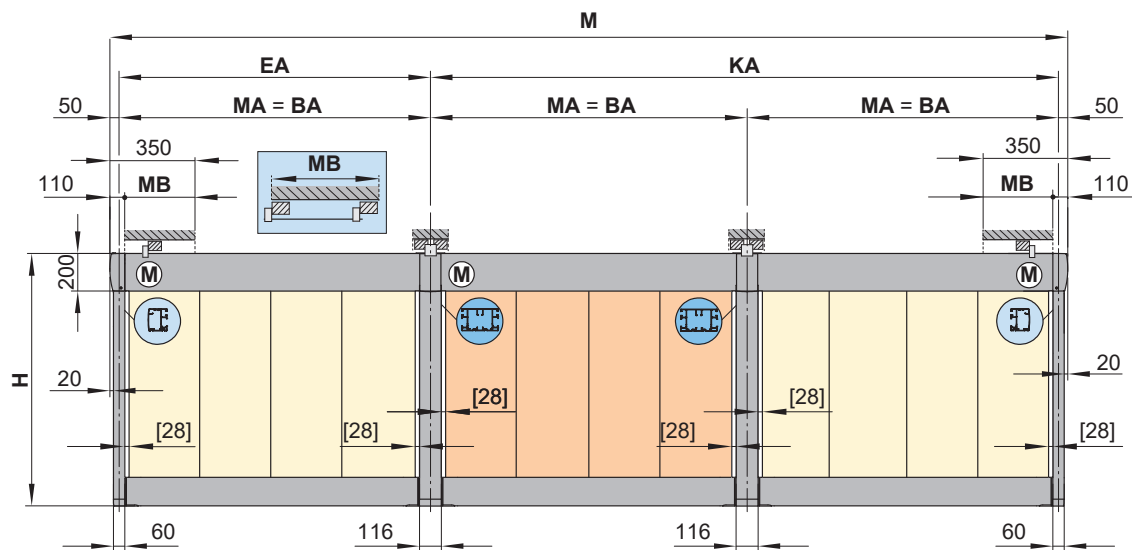
- H2 = projection short
- M = overall blind width = MA + 100 mm
- MA = **order dimension**= awning fixture width = fixture width
- MB = bracket fixture range
- (M) = motor

dimensions in mm

Coupled unit, 3 fields, 2 motors

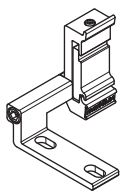


Coupled unit, 3 fields, 3 motors



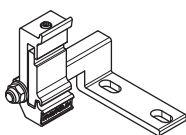
Dimension overview fixture combination 11

Fixtures, fittings and accessories



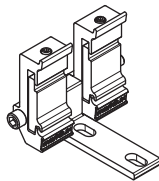
bottom fixture
left

60557.



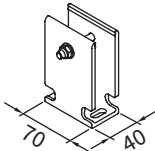
bottom fixture
right

60558.



coupling bracket
cassette bottom fixture

60572.

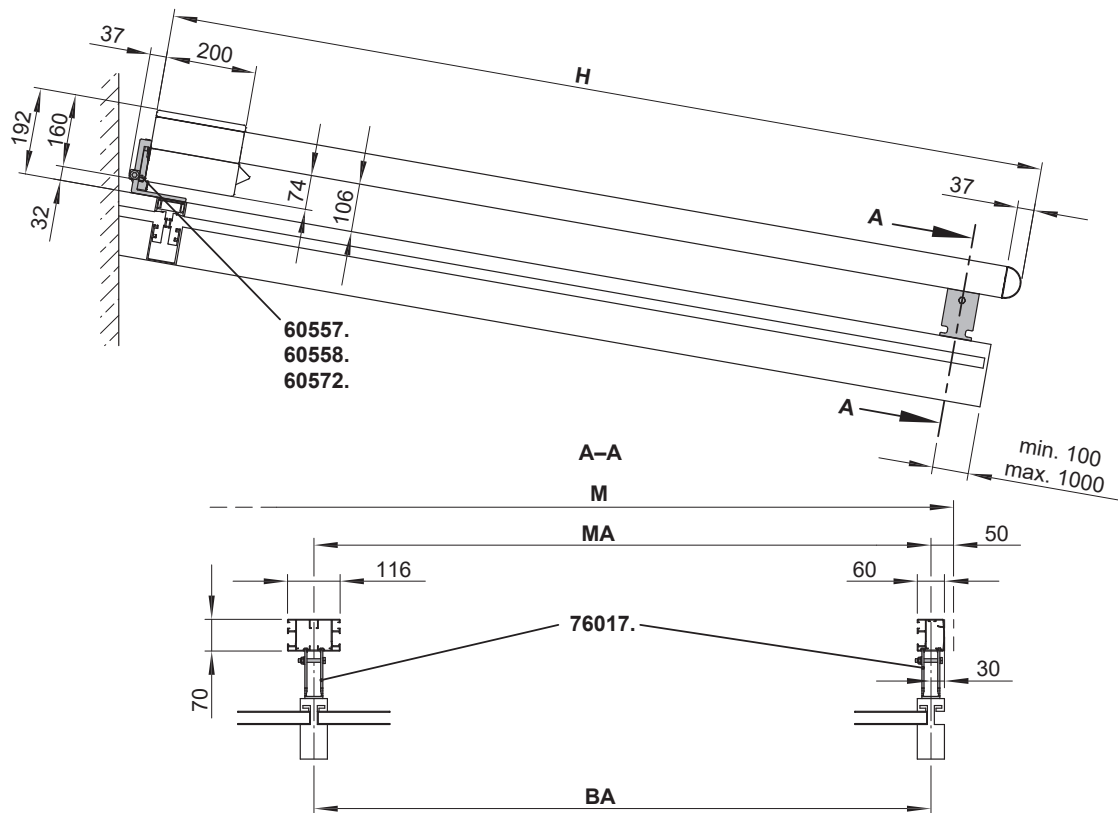


track bracket for
track-only fixture, rigid

100 mm

70 40

76017.



- BA
- = width between fixture points
- H
- = **order dimension** = extension
- M
- = awning width
- MA
- = **order dimension** = awning fixture width = fixture width

dimensions in mm

Dimension overview fixture combination 14

Fixtures, fittings and accessories

bottom fixture
left

60557.

bottom fixture
right

60558.

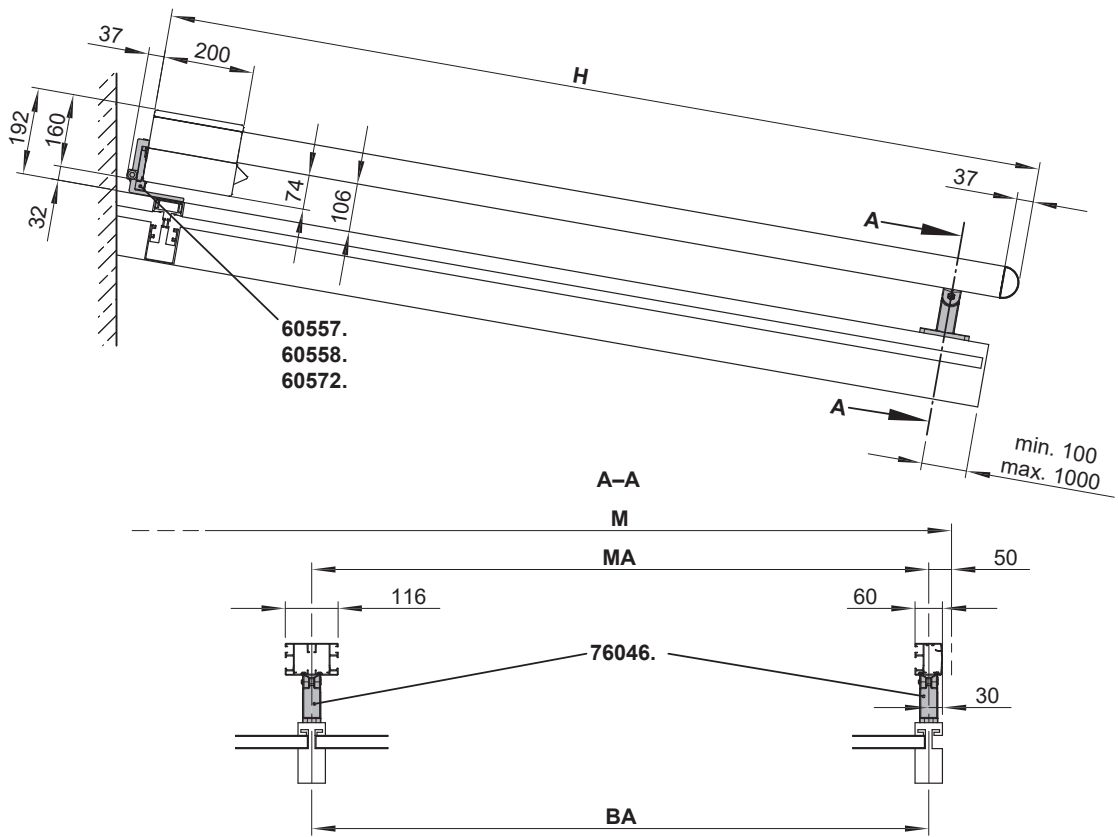
coupling bracket
cassette bottom fixture

60572.

track bracket, with
adjustable head

100 mm

76046.

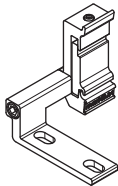


- BA = width between fixture points
H = **order dimension** = extension
M = awning width
MA = **order dimension** = awning fixture width = fixture width

dimensions in mm

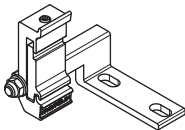
Dimension overview fixture combination 21

Fixtures, fittings and accessories



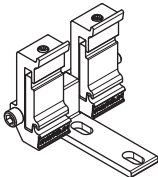
bottom fixture left

60557.



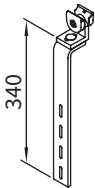
bottom fixture right

60558.



coupling bracket cassette bottom fixture

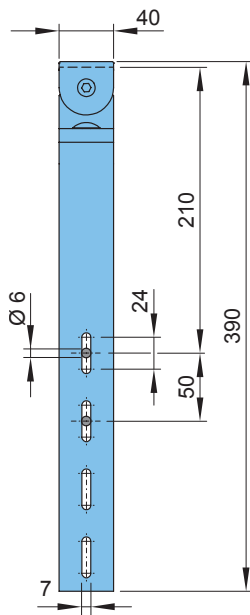
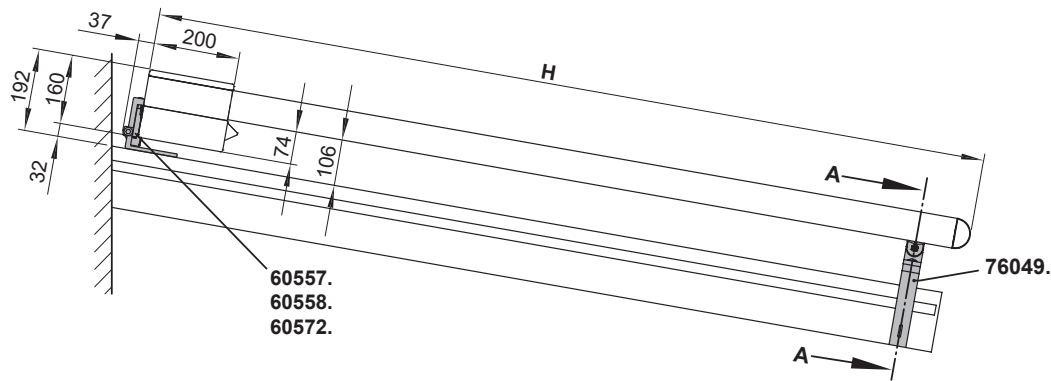
60572.



flat track bracket with adjustable head

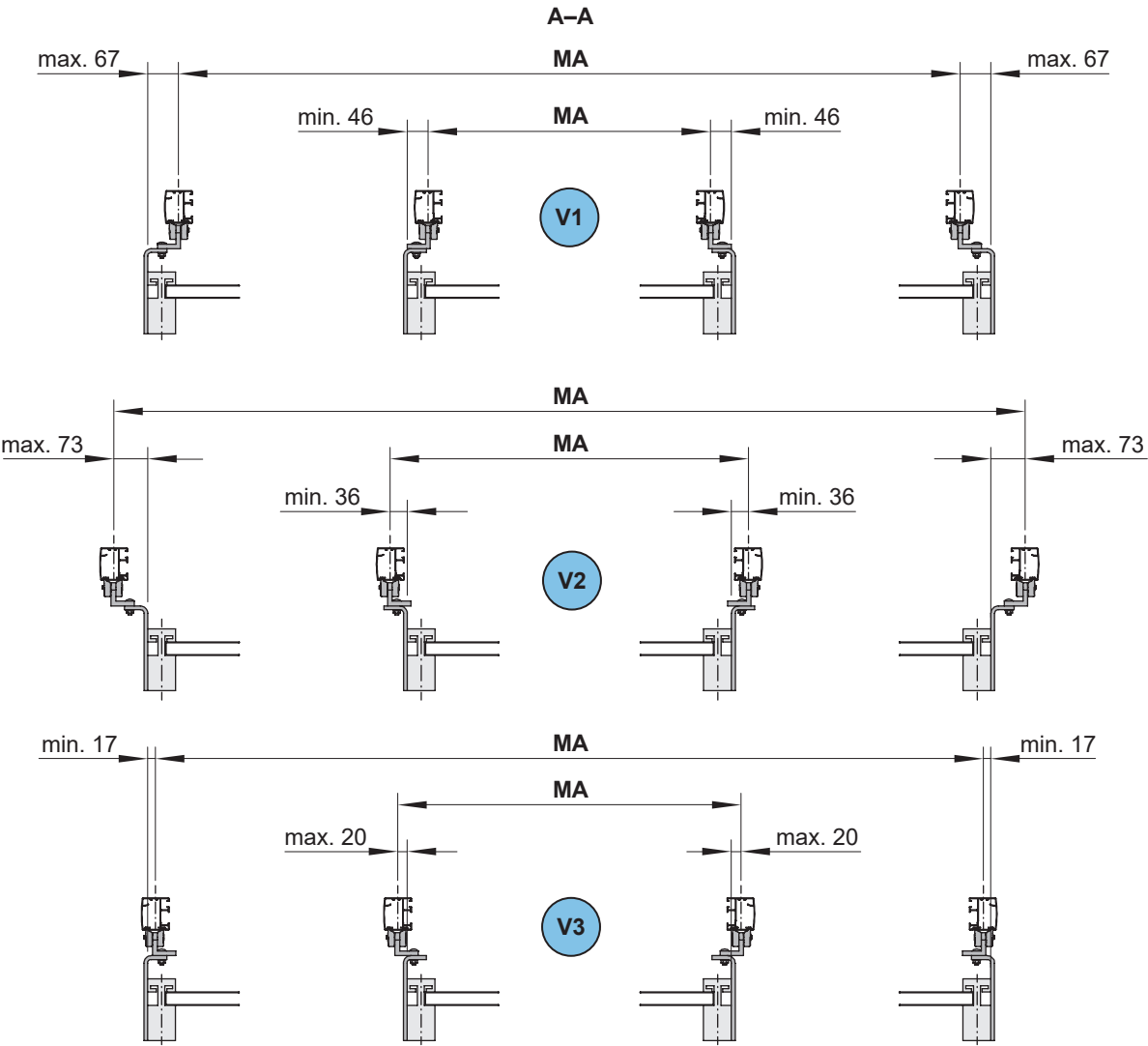
for lateral guide track fixture

76049.



Dimension overview fixture combination 21

Alternative installation options

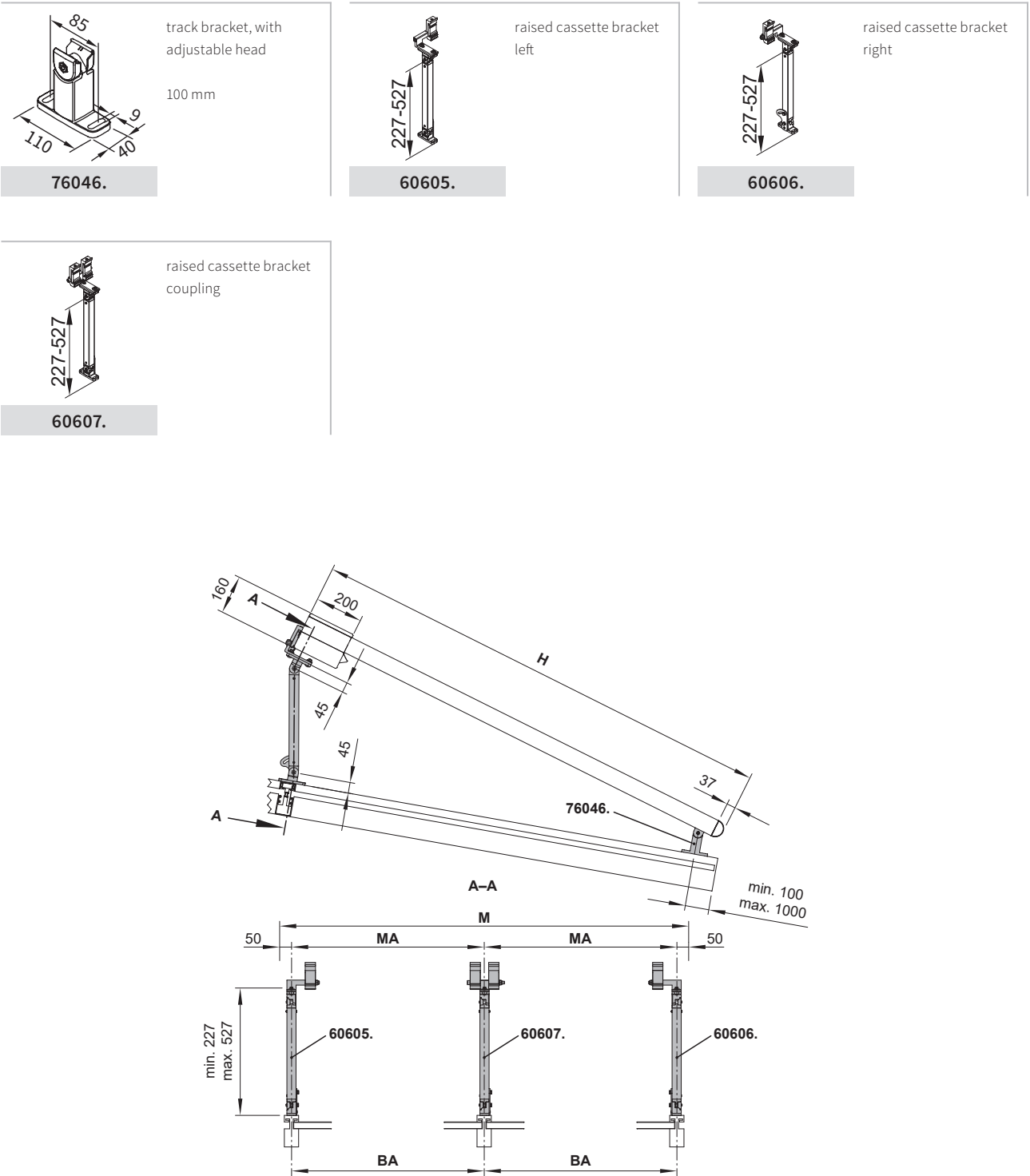


MA = order dimension = blind fixture width = fixture width
V1, V2, V3 = variants

dimensions in mm

Overview of dimensions, fixture type 61 (up to an extension of 400 cm)

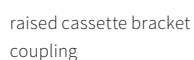
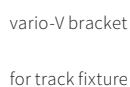
Fixtures, fittings and accessories



- BA
- = width between fixture points
- H
- = **order dimension** = extension
- M
- = awning width
- MA
- = **order dimension** = awning fixture width = fixture width

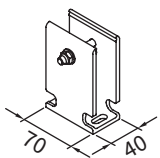
dimensions in mm

Fixtures, fittings and accessories



Dimension overview fixture combination 31

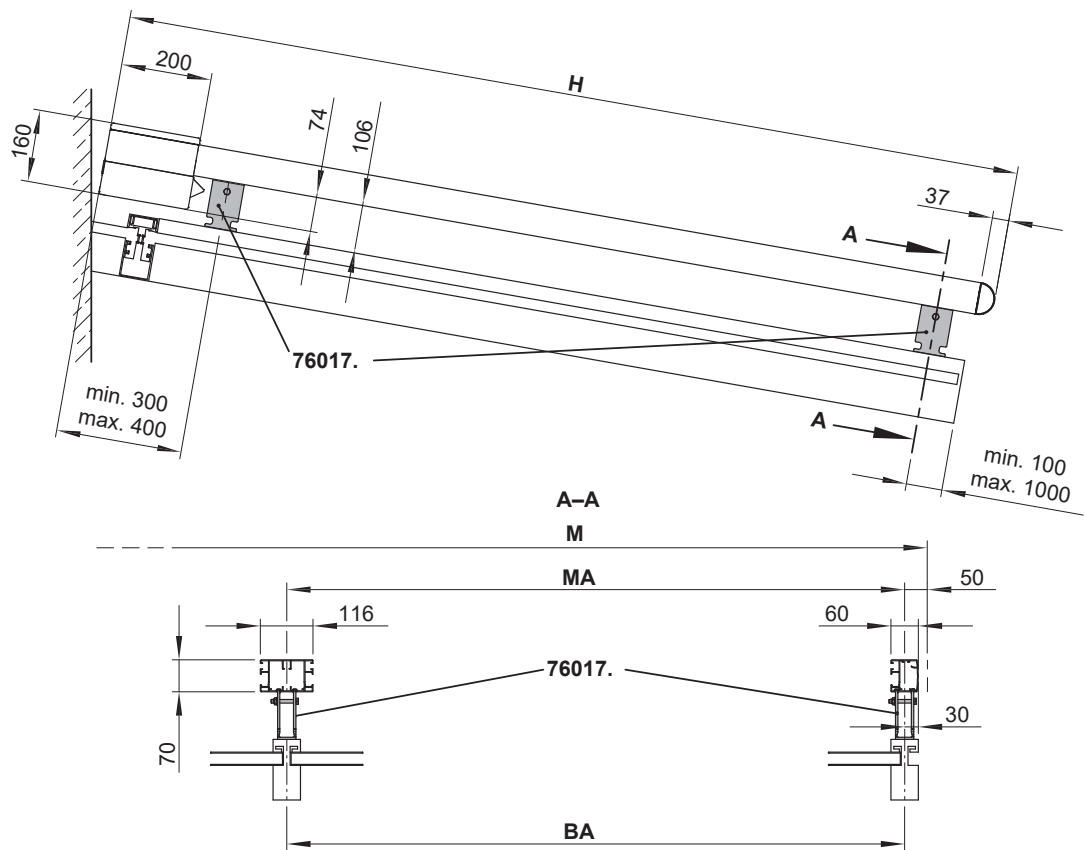
Fixtures, fittings and accessories



track bracket for
track-only fixture, rigid

100 mm

76017.

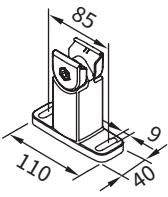


- BA
- = width between fixture points
- H
- = **order dimension** = extension
- M
- = awning width
- MA
- = **order dimension** = awning fixture width = fixture width

dimensions in mm

Dimension overview fixture combination 32

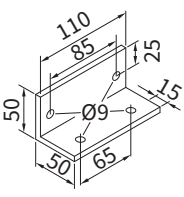
Fixtures, fittings and accessories



track bracket, with adjustable head

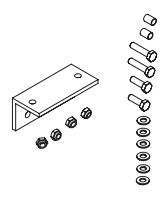
100 mm

76046.



angled mounting bracket

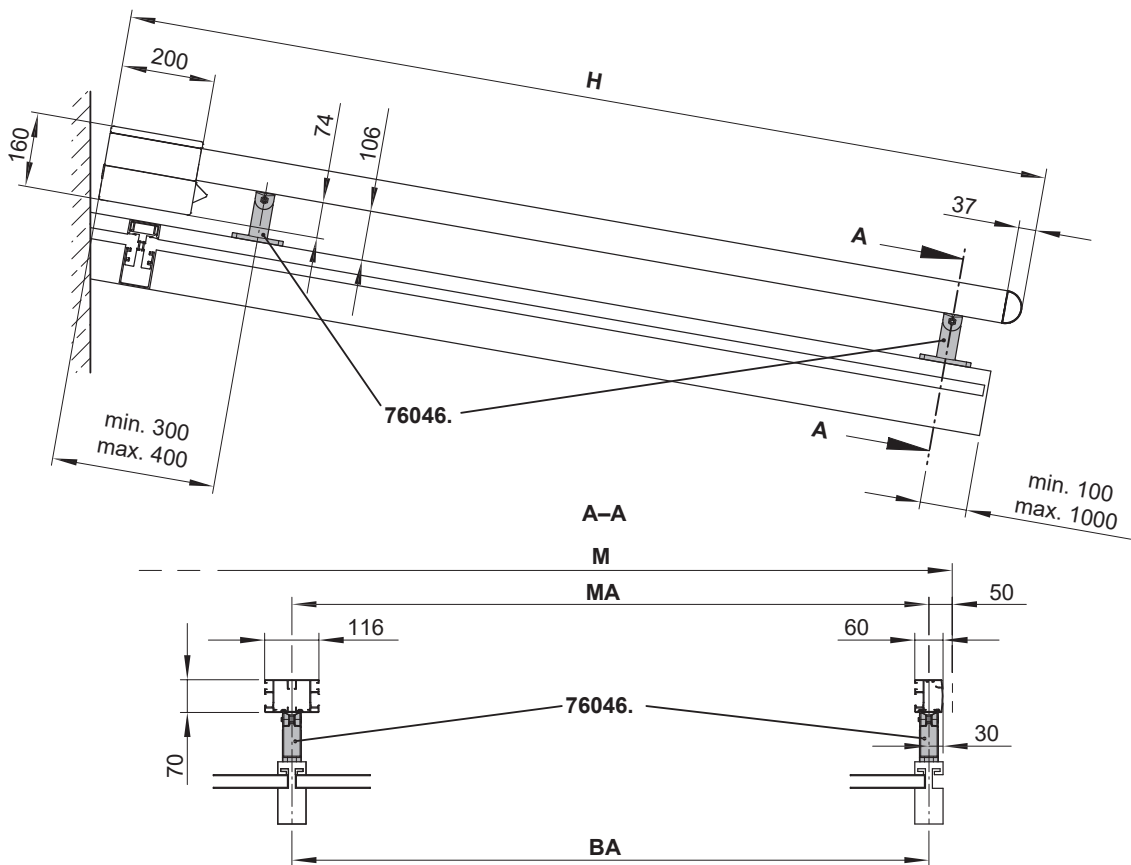
76098.



angled mounting bracket 76098.

including coupling bolts

76099.

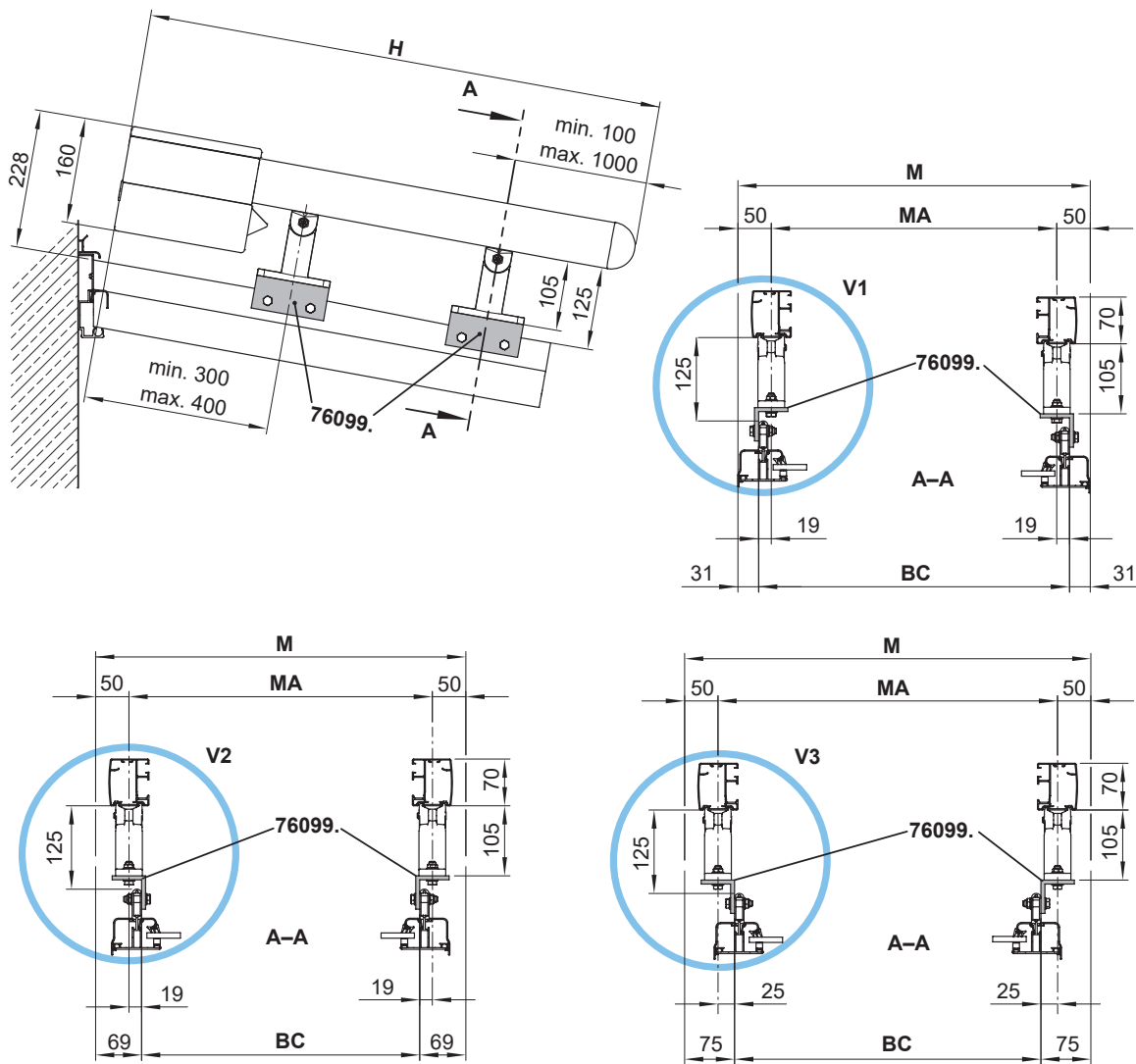


- BA = width between fixture points
- H = **order dimension** = extension
- M = awning width
- MA = **order dimension** = awning fixture width = fixture width

dimensions in mm

Dimension overview fixture combination 32

Mullion fixture with angled installation brackets

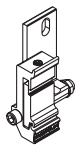


- BC = fixture width
- MA = order dimension= blind fixture width = fixture width
- H = order dimension = projection
- M = awning width
- V1, V2, V3 = variants

dimensions in mm

Overview of dimensions, fixture type 12 (up to an extension of 400 cm)

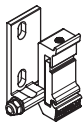
Fixtures, fittings and accessories



face fixture bracket
left

pitch adjustment
range 0°–35°

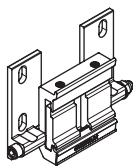
60569.



face fixture bracket
right

pitch adjustment
range 0°–35°

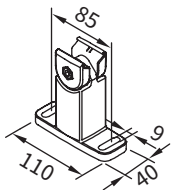
60570.



coupling bracket
cassette wall

pitch adjustment range
0°–35°

60575.

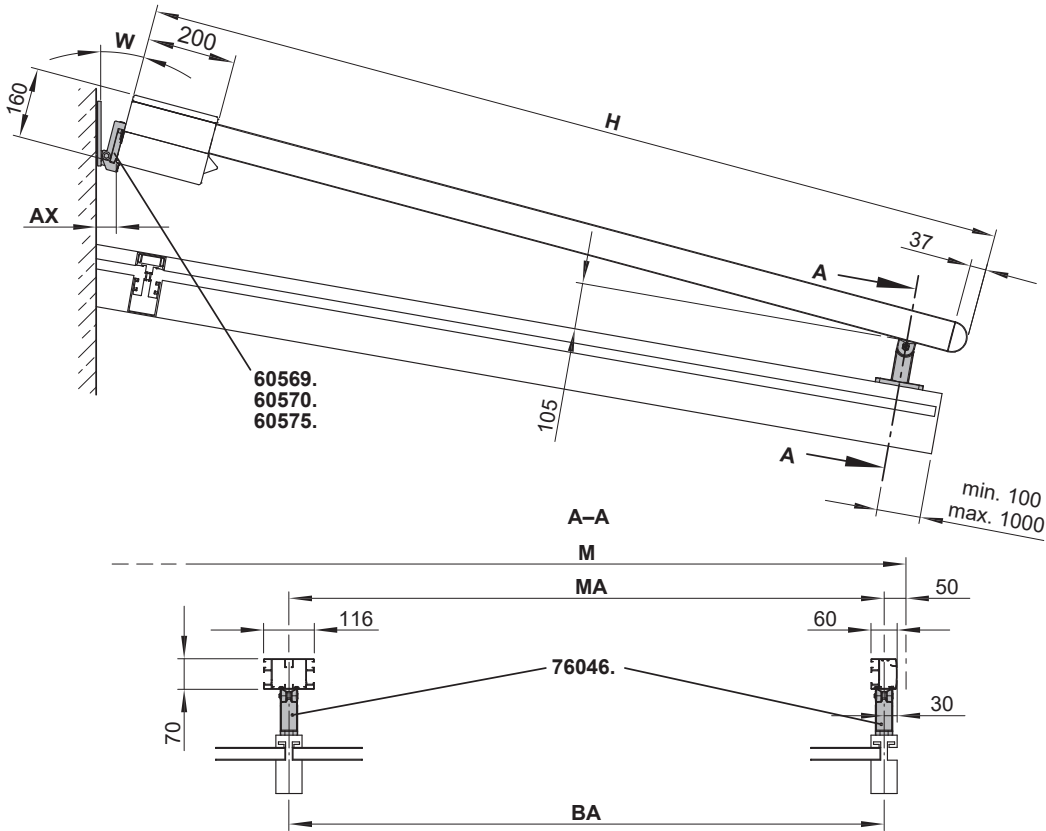


track bracket, with
adjustable head

100 mm

76046.

W	AX
5°	37
10°	36
15°	35
20°	34
25°	33
30°	31
35°	30

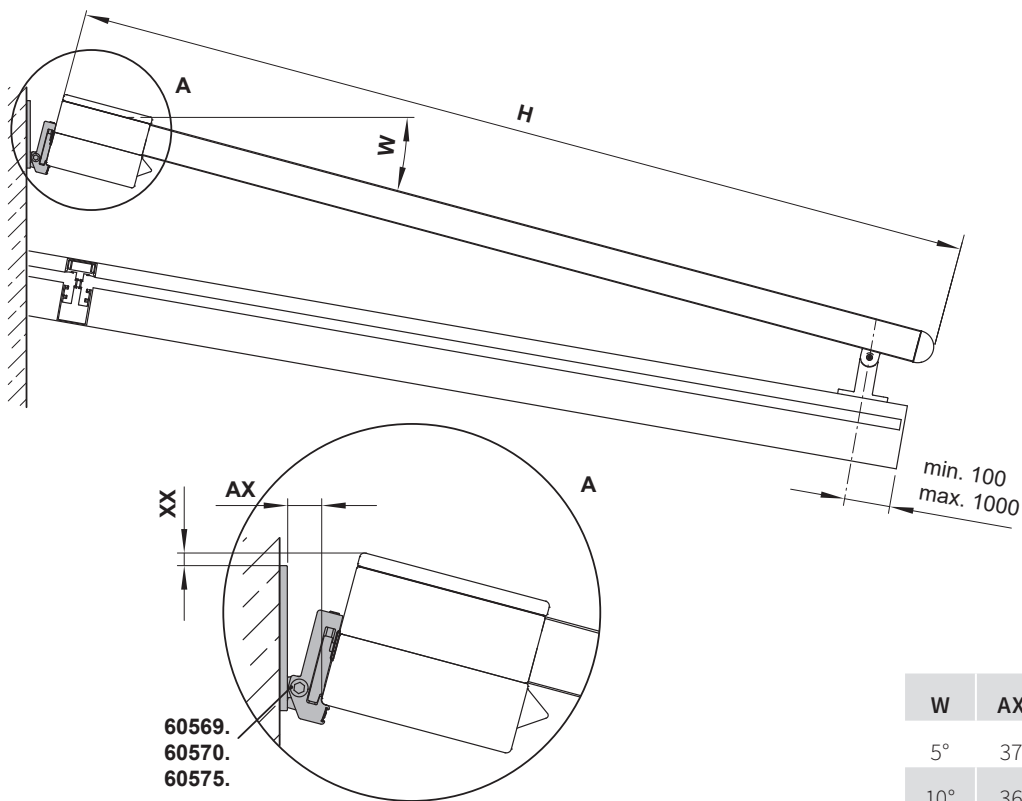


- AX = distance from cassette to wall
- BA = width between fixture points
- H = **order dimension** = extension
- M = awning width
- MA = **order dimension** = awning fixture width = fixture width
- W = pitch

dimensions in mm

Overview of dimensions, fixture type 12 (up to an extension of 400 cm)

Face fixture and track brackets with adjustable head

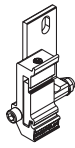


- AX = distance from cassette to wall
- H = **order dimension** = projection
- W = pitch
- XX = distance upper edge bracket – cassette

dimensions in mm

Overview of dimensions, fixture type 51 (from an extension of 400 cm)

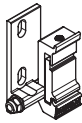
Fixtures, fittings and accessories



face fixture bracket
left

pitch adjustment
range 0°—35°

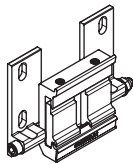
60569.



face fixture bracket
right

pitch adjustment
range 0°—35°

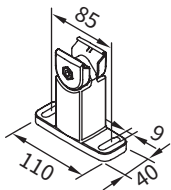
60570.



coupling bracket
cassette wall

pitch adjustment range
0°—35°

60575.

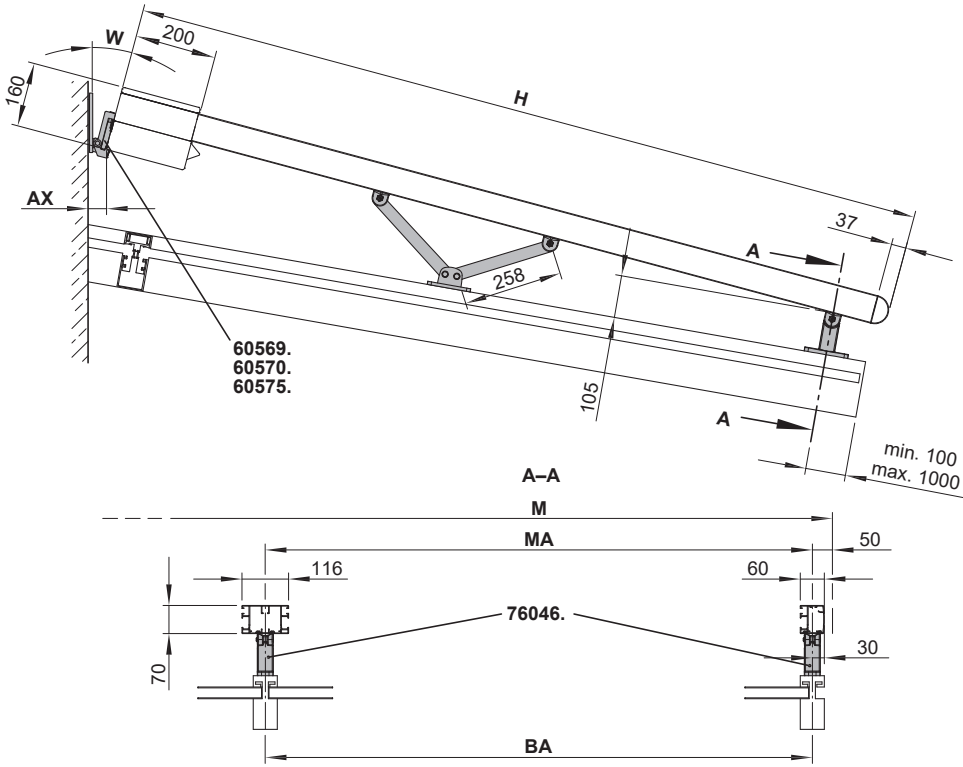


track bracket, with
adjustable head

100 mm

76046.

W	AX
5°	37
10°	36
15°	35
20°	34
25°	33
30°	31
35°	30

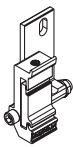


- AX** = distance from cassette to wall
BA = width between fixture points
H = **order dimension** = projection
M = awning width
MA = **order dimension** = awning fixture width = fixture width
W = pitch

dimensions in mm

Dimension overview fixture combination 22

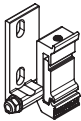
Fixtures, fittings and accessories



face fixture bracket
left

pitch adjustment
range 0°–35°

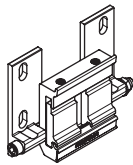
60569.



face fixture bracket
right

pitch adjustment
range 0°–35°

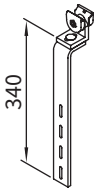
60570.



coupling bracket
cassette wall

pitch adjustment range
0°–35°

60575.

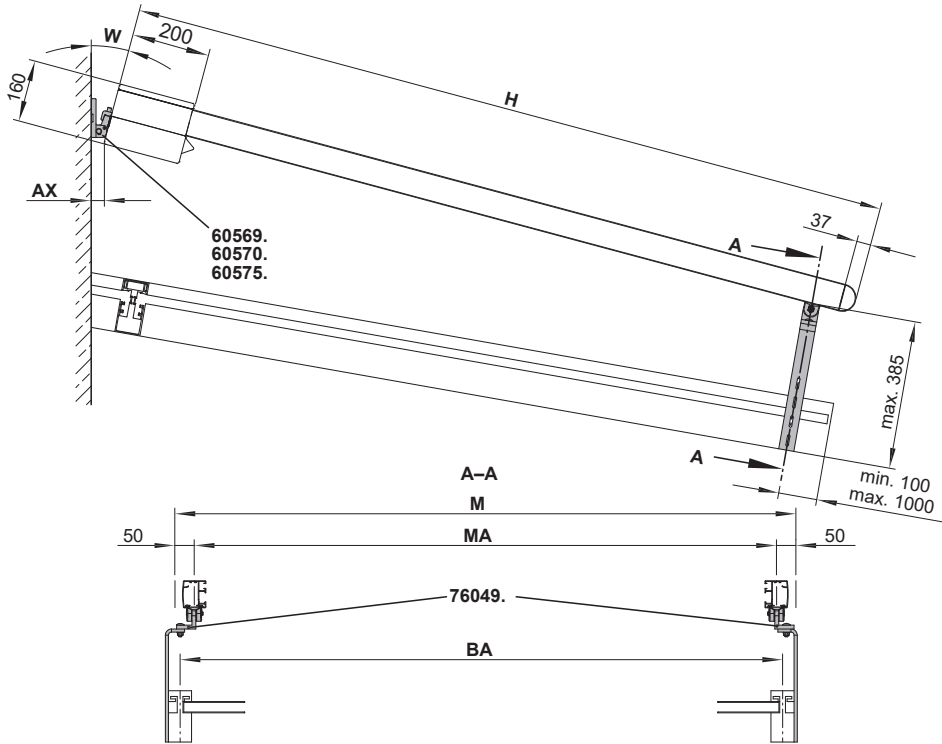


flat track bracket
with adjustable head

for lateral guide track
fixture

76049.

W	AX
5°	37
10°	36
15°	35
20°	34
25°	33
30°	31
35°	30



- AX
- = distance from cassette to wall
- BA
- = width between fixture points
- H
- = **order dimension** = extension
- M
- = awning width
- MA
- = **order dimension** = awning fixture width = fixture width
- W
- = pitch

dimensions in mm

Dimension overview eaves fixture with additional bracket fitting

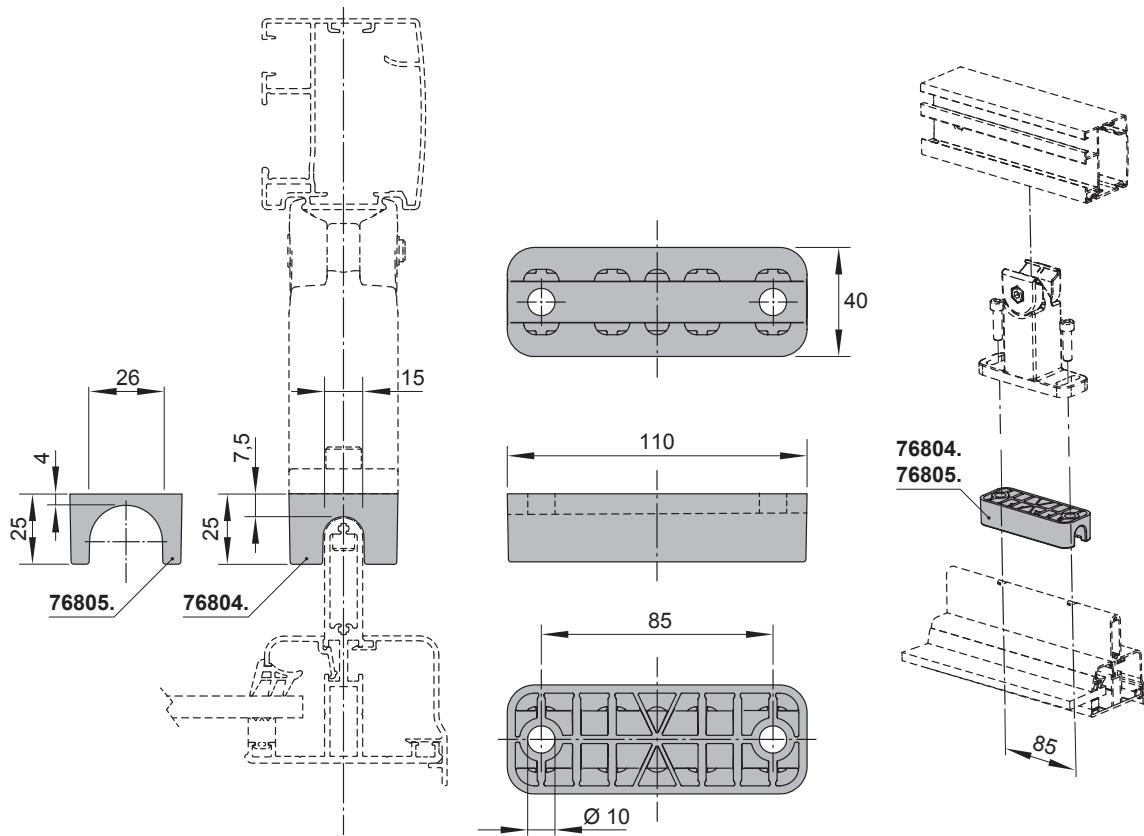
Fixtures, fittings and accessories

track bracket accessory
width 14 mm
for direct assembly on
conservatory rafters

76804.

track bracket accessory
width 25 mm
for direct assembly on
conservatory rafters

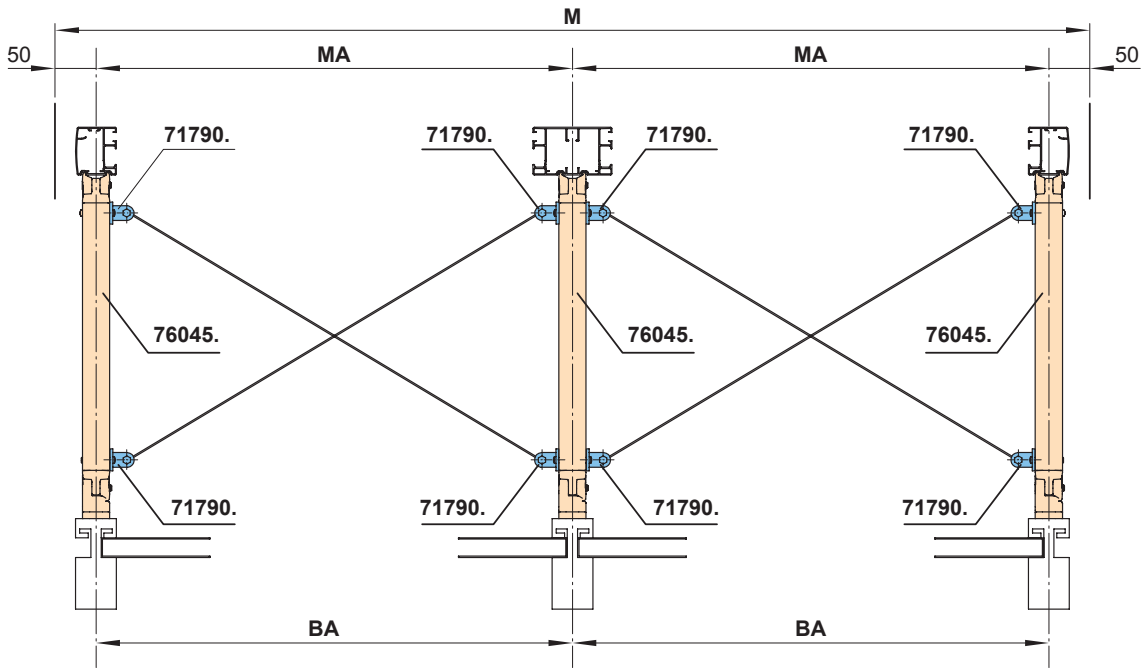
76805.



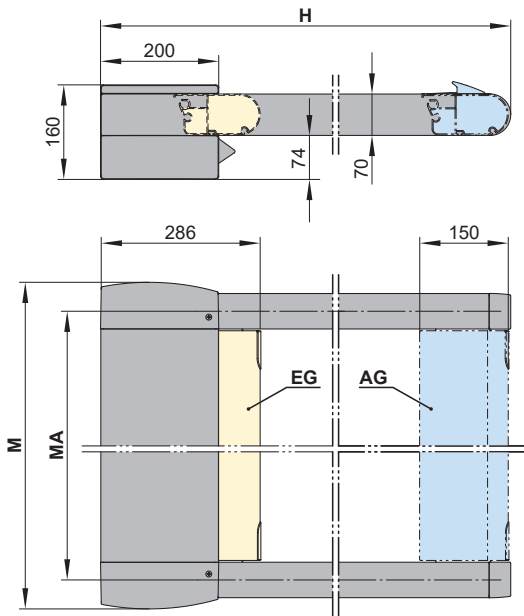
dimensions in mm

Overview of dimensions

Diagonal tensioning kit for raised bottom fixture



Distance from the back of the cassette to the leading edge of the front profile

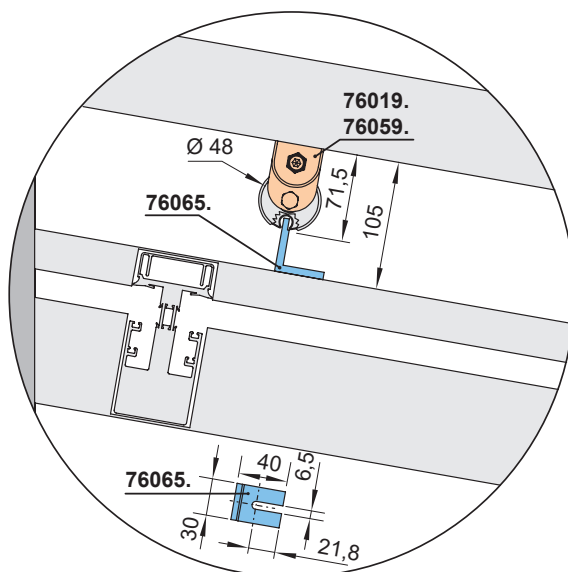


- AG = extended
- BA = width between fixture points
- MA = **order dimension** = awning fixture width = fixture width
- EG = retracted
- H = **order dimension** = extension
- M = awning width
- 71790. = diagonal tensioning kit
- 76045. = track bracket, with adjustable head and foot

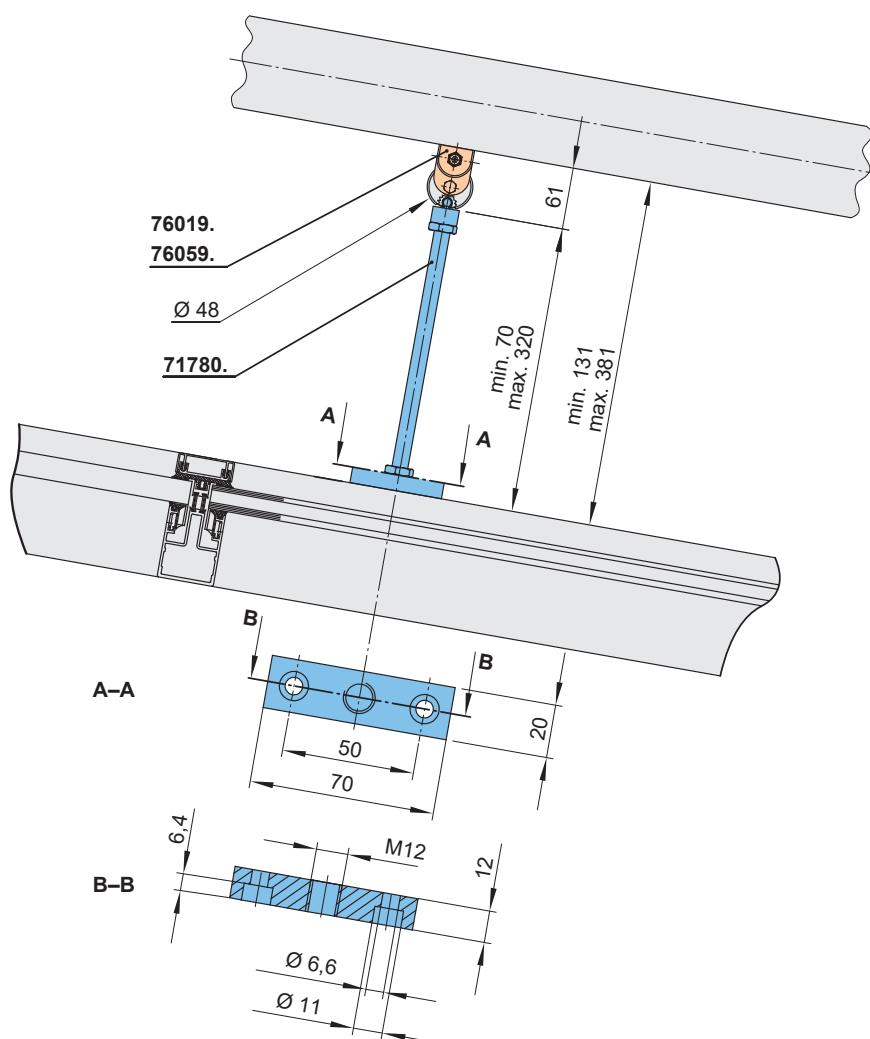
dimensions in mm

Overview of dimensions, support to prevent deflection

Support to prevent deflection of the cover support tube, 100 mm



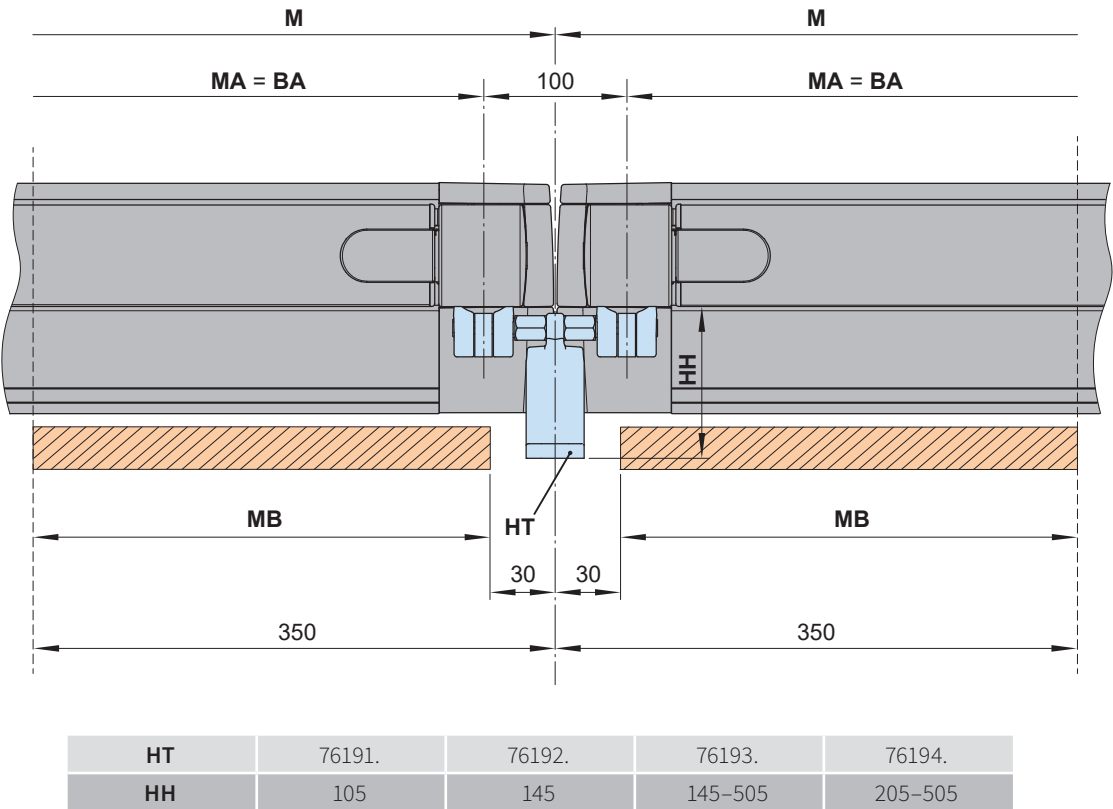
Support to prevent deflection of the cover support tube, can be shortened on site, height range 70–320 mm



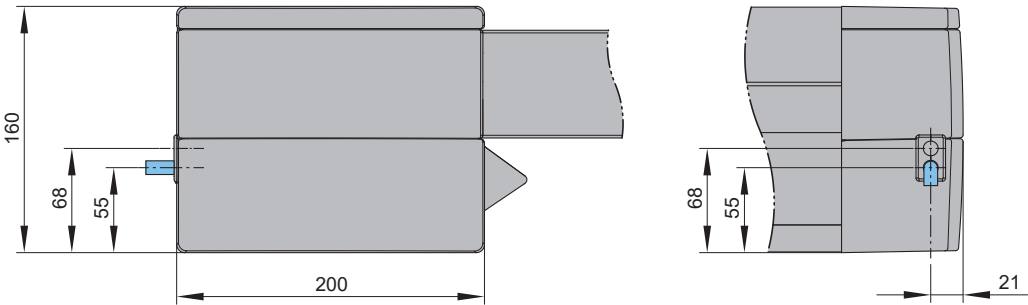
- 71780. = bracket to prevent deflection of the cover support tube
- 76019. = bracket for cover support tube
- 76059. = coupling bracket for cover support tube
- 76065. = angled support bracket

dimensions in mm

Overview of dimensions, double track bracket for single units



Motor cable exit point ¹⁾



1) depending on the operation side, left or right

- BA = width between fixture points
- HH = bracket height
- HT = bracket
- M = awning width
- MA = **order dimension** = awning fixture width = fixture width
- MB = bracket fixture range

- 76191. = double track bracket 100 mm
 - 76192. = double track bracket 140 mm
 - 76193. = double track bracket 140-500 mm
 - 76194. = double track bracket 200-500 mm
- dimensions in mm

- 01
- 02
- 03
- 04
- 05
- 06
- 07
- 08
- 09
- 10
- 11
- 12**
- 13
- 14
- 15
- 16
- 17
- 18
- 19
- 20