



Above glass awning

markilux 8850

Exterior awning for conservatories with bevel-edged roofs.




German
Design Award
NOMINEE

markilux.com

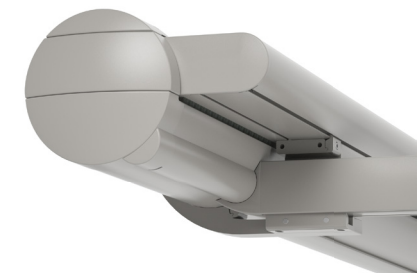
markilux
safe timeless beautiful

Product Characteristics

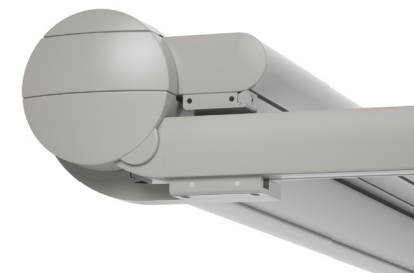
Wind resistance class 2
Beaufort 5 → 7.5–10.4 m/s → 28–37 km/h → 17–23 mph



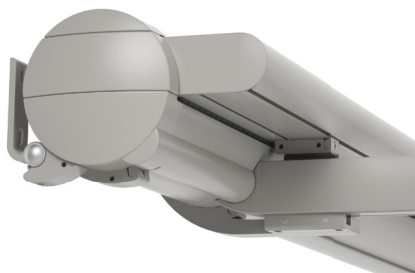
1 bottom fixture, indented guide track



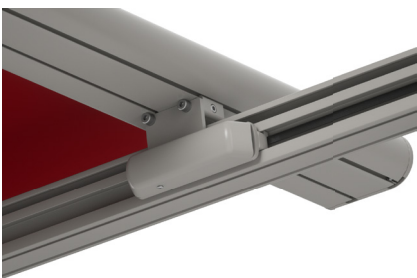
1 bottom fixture, guide track moved out as far as possible



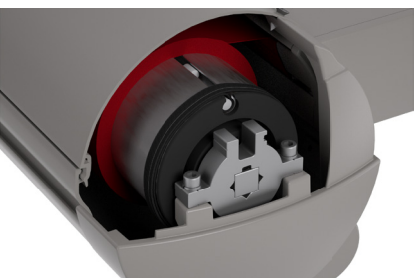
2 face fixture, indented guide track



3 view of the bogey on the front profile



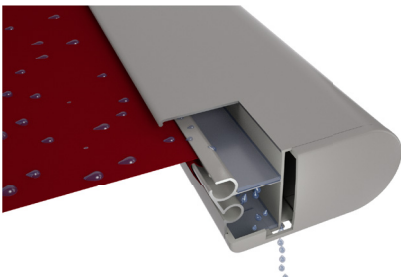
4 maintenance opening in the cassette



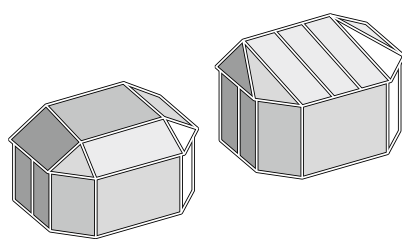
4 awning retracted, all round cover protection



5 concealed gutter with water drainage holes to the side



examples of its use on various conservatory shapes



Product Characteristics

Description

- exterior awning for bevel-edged conservatories

Special features

- the cover runs in and out above the guide tracks – the cover appearance from the exterior is ideal and gives more flexibility when fitting
- guide tracks can be indented up to 100cm – if the system is asymmetrical the difference left and right may not exceed 40 cm
- the guide tracks can overrun the last bracket position by up to 100 giving more sun protection
- fully encompassing cassette that protects the cover perfectly
- tried-and-tested tensioning system with drive belts and integrated gas pistons – delivers optimum cover tension – in any phase of extension
- optional wall sealing profile – to cover the gap between wall and awning cassette

Dimensions

- single unit: 80–650 cm in width, maximum extension 500 cm (depending on the width)
- maximum dimensions width × extension: 500 × 500 cm / 600 × 450 cm / 650 × 400 cm
- intermediate sizes are available

Roller tube and lateral bearings

- round roller tube Ø 95 mm with keyway, galvanised steel – excellent stability, ensures near perfect cover performance even at the largest widths
- the roller tube bearing is made of die-cast aluminium

Awning profiles

- extruded aluminium, in façade quality, powder coated
- cassette profile in two pieces, round, Ø 187 mm
- guide tracks angular, width × height 60 mm × 70 mm
- front profile rounded at the front, depth × height 150 mm × 70 mm

End caps

- the cassette end caps made of die-cast aluminium, powder coated
- the top maintenance cover is made of high-quality plastic, powder coated
- the front profile end caps are made of high-quality plastic, powder coated
- the front profile end caps are made of high-quality plastic, powder coated

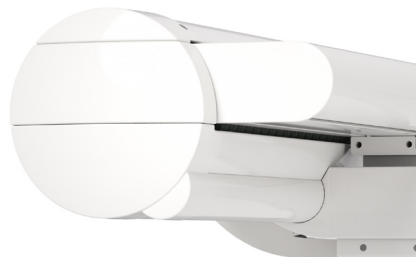
Fixture brackets

- extruded aluminium, powder coated
- cassette brackets: bottom fixture, face fixture
- guide track brackets: raised bottom fixture, flat track bracket
- standard bracket heights: 20 mm / 105 mm (bespoke heights can be ordered)
- other accessories are available

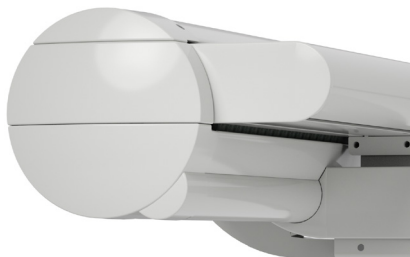
01 **Frame colours**

02 markilux frame colours without surcharge

03 traffic white, RAL 9016



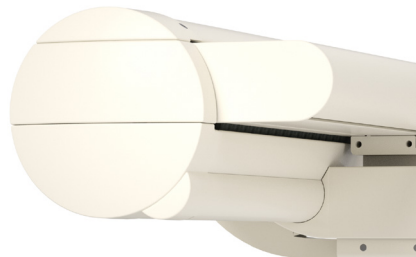
metallic aluminium, RAL 9006



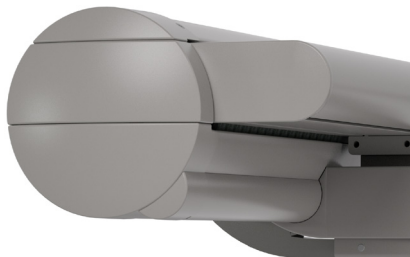
grey brown, similar to RAL 8019



07 off-white textured finish, 5233 ¹⁾



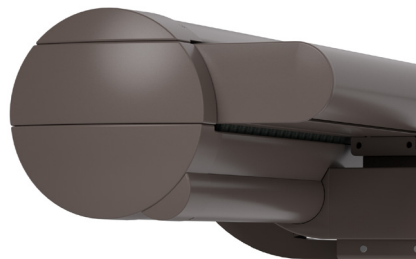
stone grey metallic, 5215 ¹⁾



anthracite metallic, 5204 ¹⁾



12 havana brown textured finish, 5229 ¹⁾



17 **Non-standard powder-coated finish**

18 Bespoke frame colours incur a surcharge – matt, metallic, finely textured and pearl finishes as well as other colour ranges (DB, Tiger etc.) on request. All frame colours are available at a surcharge with enhanced corrosion protection.

19 Colours may differ slightly from those depicted in both hue and finish.

20 ¹⁾ textured finish

Dimensions and configuration options

Single unit

Order dimensions		Awning width										Minimum width		
		150	200	250	300	350	400	450	500	550	600	650	Hard-wired motor	Radio-controlled motor
		70	151	201	251	301	351	401	451	501	551	601		
		150	200	250	300	350	400	450	500	550	600	650		
H ¹⁾	150												70	80
	200													
	250													
	300													
	350													
	400													
	450													
	500													

dimensions in cm

1) = additional guide track overhang of 90 mm

H = extension

General note

In the case of larger extensions, the cover may sag slightly when the awning is being extended or retracted. In windy or wet conditions and a cover area more than 16 m², may lead to the cover coming into contact with the conservatory roof.

Operation

	standard	optional
crank handle	—	—
hard-wired motor	✓	—
silentec motor (optionally with an external io)	—	—
radio-controlled motor io, 868 MHz	—	✓
radio-controlled motor RTS, 433 MHz	—	✓
868 MHz radio-controlled motor io with manual override	—	—

Coupled awnings

not available

Shadeplus

not available

Awning cover

	fabric pattern no.	standard	optional
sunvas ^{1) 4)}	300..–315..	✓	—
sunsilk ^{1) 4)}	324.. / 328.. / 369..	✓	—
sunbow ^{1) 4)}	411..–427..	✓	—
smart art	340..	—	✓
perfortex ²⁾	331.. / 332..	✓	—
Soltis Perform 92 ³⁾	92–..	—	✓

Standard fabric panel widths

1) 60 cm 2) 120 cm 3) 88,5 cm

4) In the case of striped patterns, a symmetrical pattern repeat at every second seam is not possible.

Optional accessories

storm safety clip for the cassette

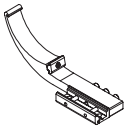
for wall sealing profile

automatic controls (light, wind, rain)

N.B. Important background information can be found in the chapter "Optional Accessories"

Fixtures, fittings and accessories

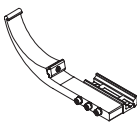
Bottom fixture brackets, cassette



track bracket
on housing

left
included with the
delivery

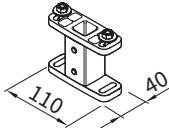
76175.



track bracket
on housing

right
included with the
delivery

76176.

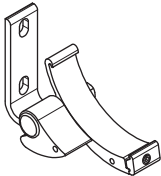


track bracket

fixture type 32

76085.

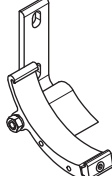
Cassette fixture bracket



face fixture cassette
bracket, left

pitch adjustment
range 5°—45°

76063.

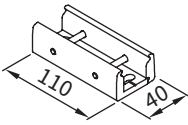


face fixture cassette
bracket, right

pitch adjustment
range 5°—45°

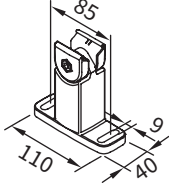
76064.

Track bracket



track bracket
plat

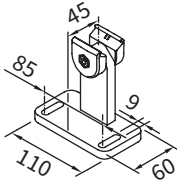
76207.



track bracket, with
adjustable head

100 mm

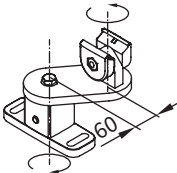
76046.



track bracket with offset
footplate

100 mm

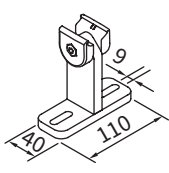
76199.



windmill track bracket

100 mm

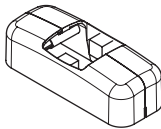
76054.



track bracket
for conservatory
transom fixture

100 mm

76055.



covering cap
for square track bracket

standard accessory for
bracket

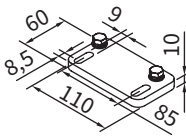
2 × 76718.

Accessories



storm safety clip

76235.



adapter plate
for track bracket

110 × 60 × 10 mm

78165.



storm safety bracket
for the cassette

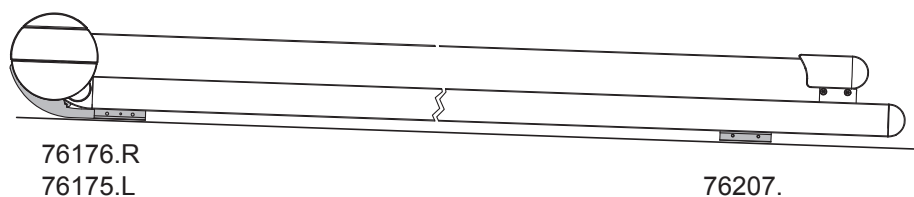
(recommended in
windy locations and
as an additional safety
measure for the cassette)

76197.

Fixture types

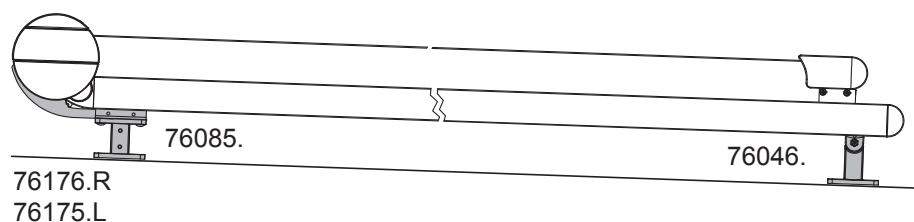
Bottom fixture

11



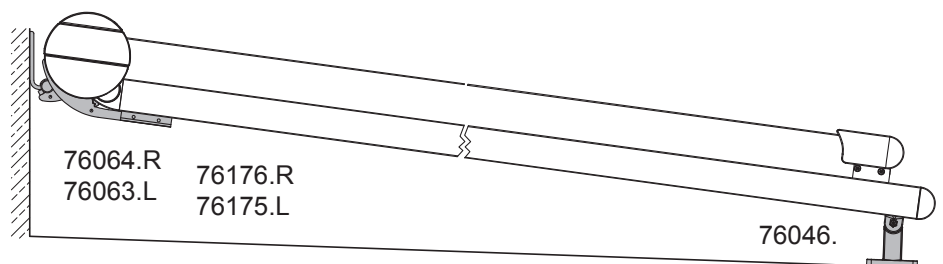
Track-only fixture

32



Face fixture

12



Individual bracket selection:

see "Fixtures, fittings and accessories".

Bottom fixture:

Awning extension > 400 cm, always 2 brackets per guide track.

Track-only fixture:

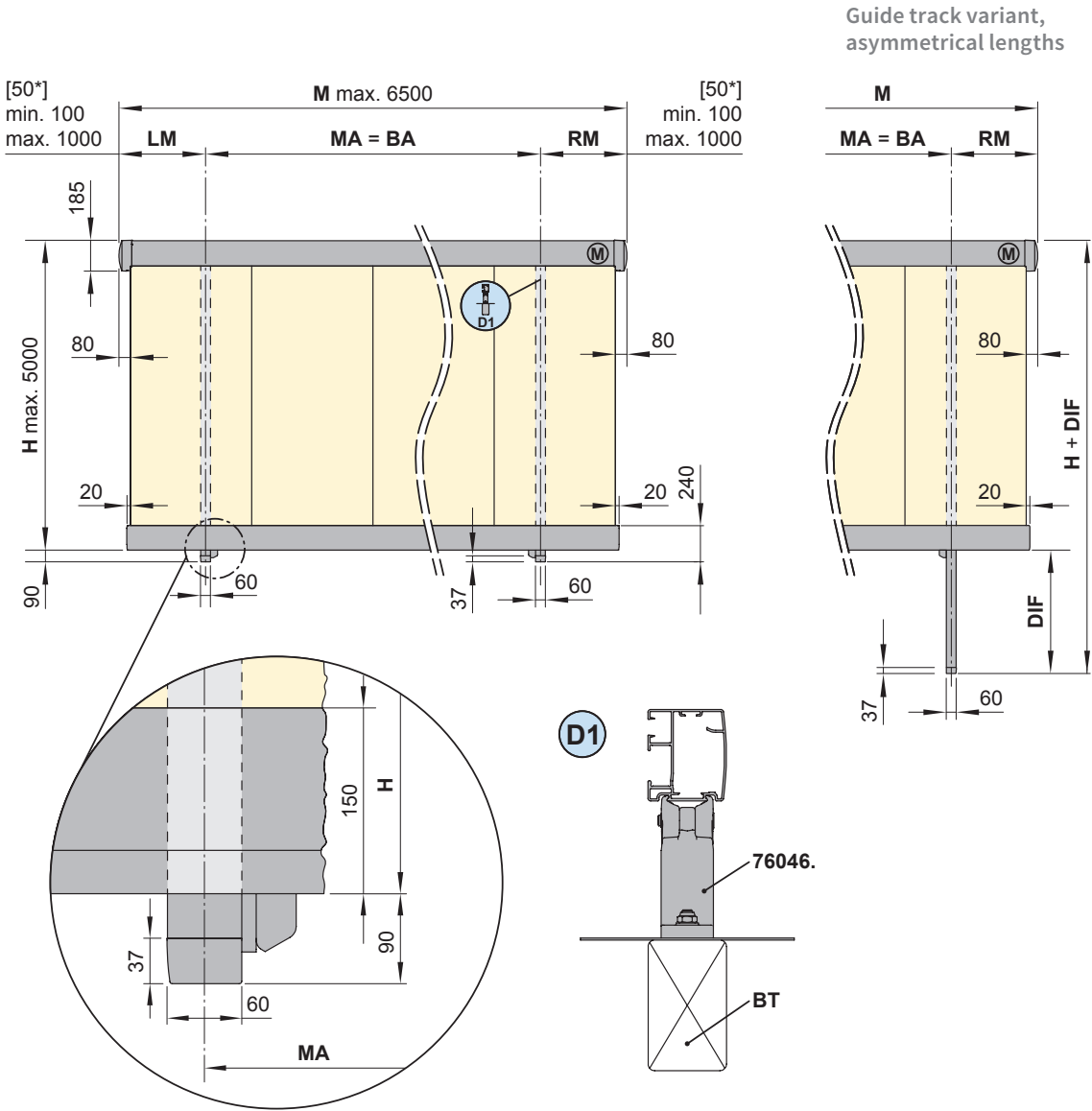
Awning extension > 400 cm, always 3 brackets per guide track.

Face fixture:

Awning extension > 400 cm, always 2 brackets per guide track.

Overview of dimensions

Single unit



Versions that can be ordered

Option 1: With guide tracks indented. Both the R and L measurements must be smaller than the awning fixture width. In the case of asymmetrical units the difference between the L and R dimensions may not exceed 400 mm. The tolerance in the fixture width is + 5 / - 10 mm.

Option 2: With the tracks as far out as possible. In this case, the L and R dimensions are 50 mm.

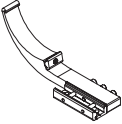
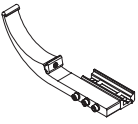
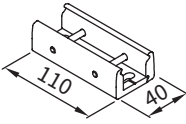
- [...*] = dimensions for units with guide tracks pushed out as far as possible
- 76046.** = track bracket 100 mm
- BA** = width between fixture points
- BT** = component / fixture substrate
- D1** = detail of single guide track with bracket
- DIF** = difference in measurement
- H** = **order dimension** = projection

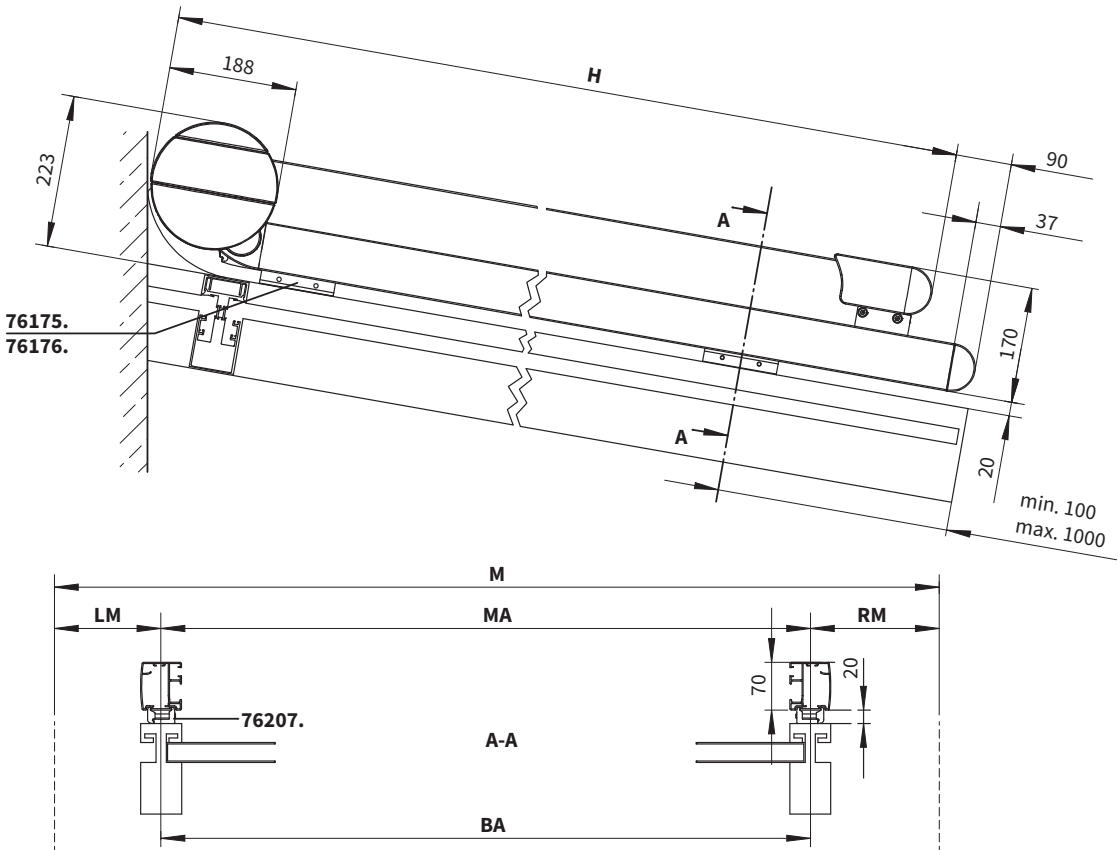
- M** = awning width
- LM** = **order dimension** = L dimension
- MA** = **order dimension** = awning fixture width = fixture width
- MB** = bracket fixture range
- (M)** = motor
- RM** = **order dimension** = R dimension

dimensions in mm

Dimension overview fixture combination 11

Fixtures, fittings and accessories

 <p>track bracket on housing</p> <p>left included with the delivery</p>	 <p>track bracket on housing</p> <p>right included with the delivery</p>	 <p>track bracket plat</p>
76175.	76176.	76207.



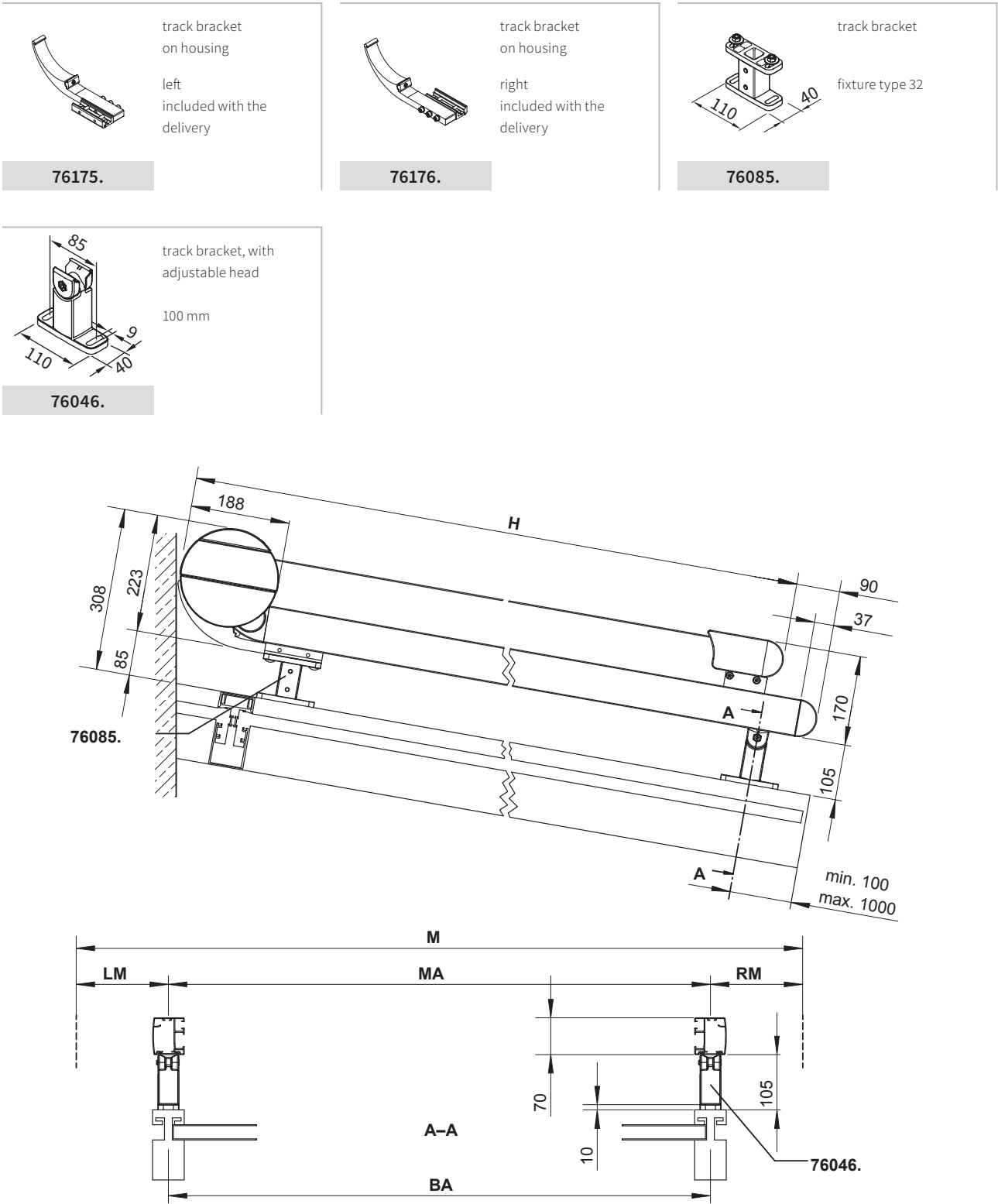
N.B! The maximum pitch of the awning may not exceed 90°. This awning type cannot run uphill.

- BA = width between fixture points
- H = **order dimension** = projection
- LM = **order dimension** = L dimension
- M = awning width
- MA = **order dimension** = awning fixture width = fixture width
- RM = **order dimension** = R dimension

dimensions in mm

Dimension overview fixture combination 32

Fixtures, fittings and accessories



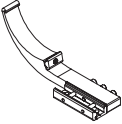
N.B! The maximum pitch of the awning may not exceed 90°. This awning type cannot run uphill.

BA	=	width between fixture points	
H	=	order dimension = extension	
LM	=	order dimension = L dimension	
M	=	awning width	
MA	=	order dimension = awning fixture width = fixture width	
RM	=	order dimension = R dimension	

dimensions in mm

Dimension overview fixture combination 12

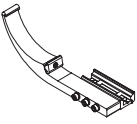
Fixtures, fittings and accessories



track bracket
on housing

left
included with the
delivery

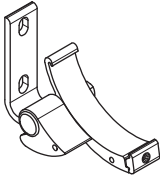
76175.



track bracket
on housing

right
included with the
delivery

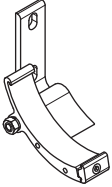
76176.



face fixture cassette
bracket, left

pitch adjustment
range 5°–45°

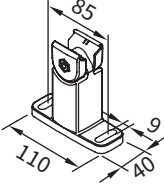
76063.



face fixture cassette
bracket, right

pitch adjustment
range 5°–45°

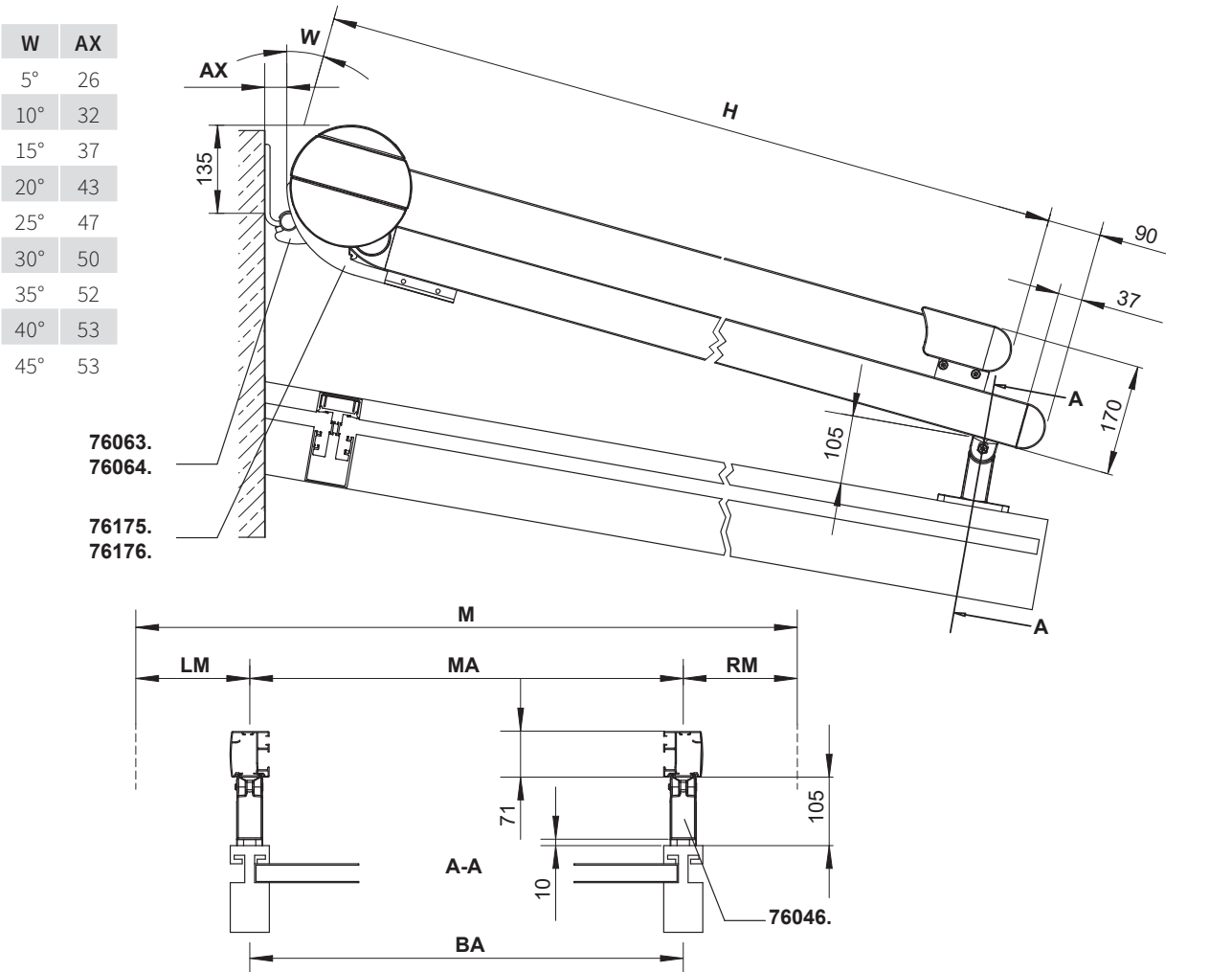
76064.



track bracket, with
adjustable head

100 mm

76046.



AX

=

distance from cassette to wall

BA

=

width between fixture points

H

=

order dimension = extension

LM

=

order dimension = L dimension

M

=

awning width

MA

=

order dimension = awning fixture width =
fixture width

RM

=

order dimension = R dimension

W

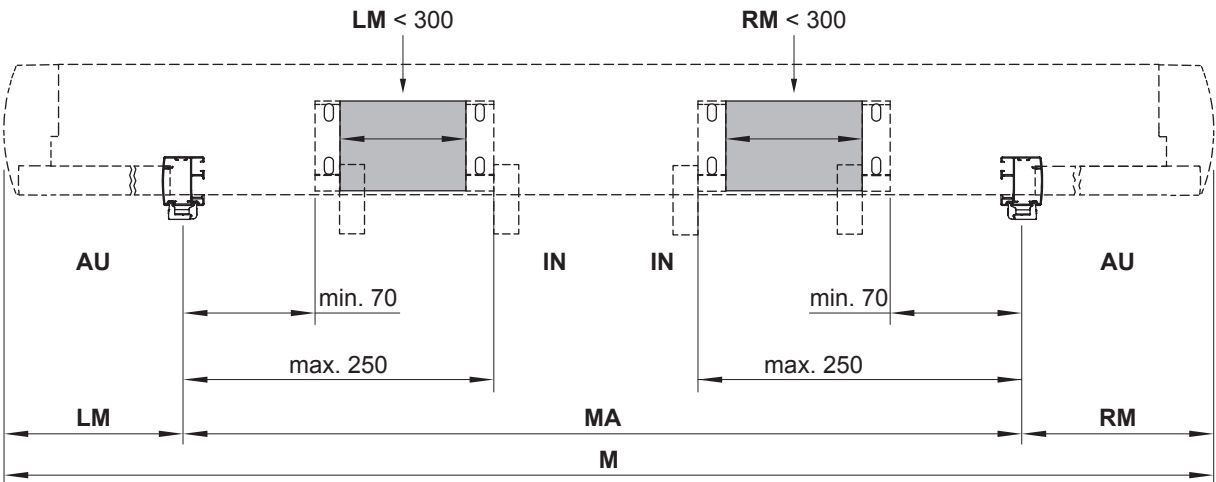
=

pitch

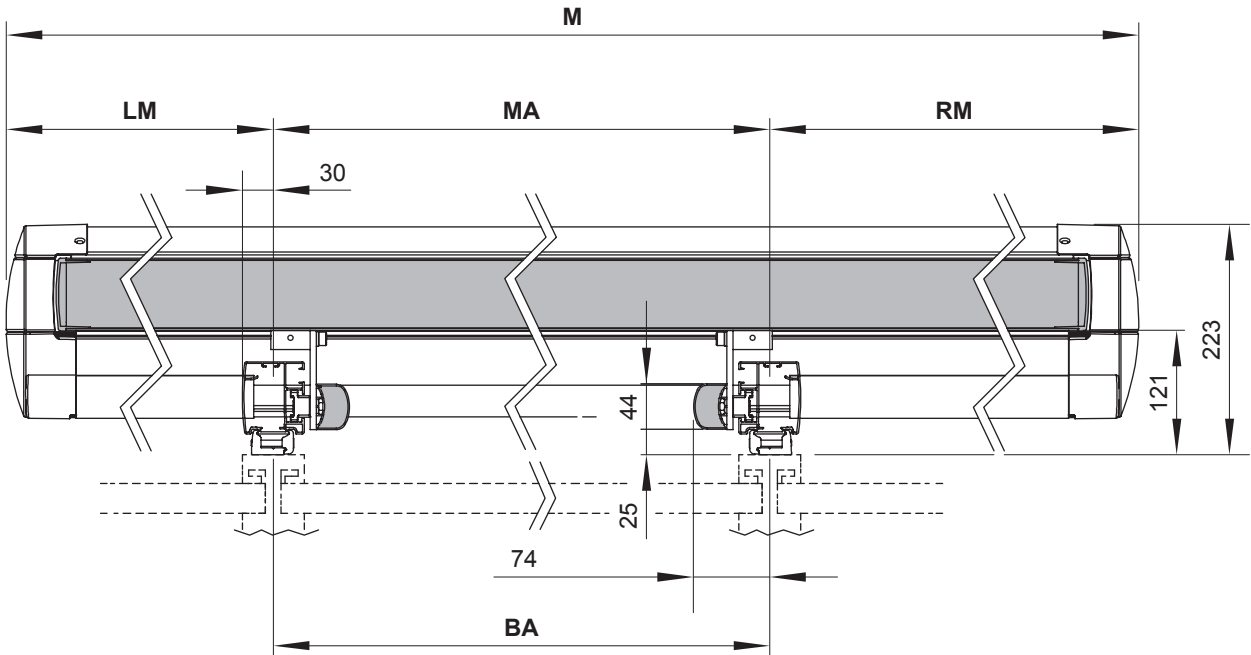
dimensions in mm

Overview of dimensions

Bracket position, face fixture, fixture type 12



Cross section through the guide track with view of the bogey and the cassette housing



- AU = exterior
- BA = width between fixture points
- H = **order dimension** = extension
- IN = interior
- LM = **order dimension** = L dimension
- M = awning width
- MA = **order dimension** = awning fixture width = fixture width
- RM = **order dimension** = R dimension

dimensions in mm