



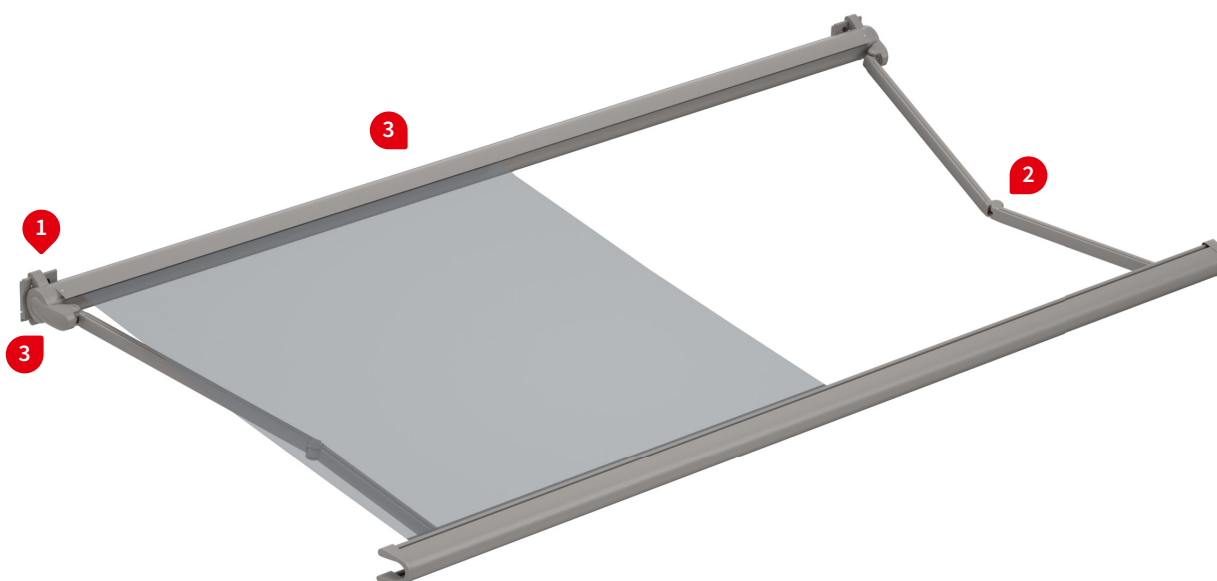
Cassette awning

markilux 990

The compact markilux with folding arms – svelte, attractive and functional.

Product Characteristics

Wind resistance class 2
Beaufort 5 → 7.5–10.4 m/s → 28–37 km/h → 17–23 mph



11

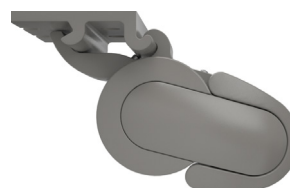
1 face fixture



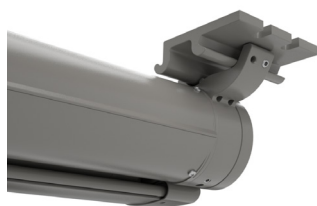
1 face fixture,
maximum pitch of 35°



1 top fixture



1 top fixture, view from the rear



2 twin steel-link chain,
corrosion protected



2 bionic tendon made of high-tech
fibres for optimum power trans-
ference ¹⁾



during extension



3 wall sealing profile ¹⁾, end cap insert
in polished chrome



¹⁾ Optional accessories

Product Characteristics

Description

- the perfectly designed compact cassette awning. The outstanding “lightweight” for balcony and patio

Special features

- self-supporting cassette profile construction, the brackets being installed at each end of the awning – also suitable for bridging larger distances
- cassette with arms situated in front and at each end, which – when the awning is closed – are encompassed fully by the front profile lending a harmonious overall appearance to the awning
- even when the awning is fully extended, the roller tube is completely protected

Dimensions

- cassette in the standard version: depth 217 mm, height 124 mm
- single unit: minimum width 179 cm at the smallest projection of 150 cm, maximum width 500 cm at the largest projection of 300 cm

Roller tube and lateral bearings

- round roller tube Ø 85 mm with keyway, galvanised steel – excellent stability, ensures near perfect cover performance even at the largest widths
- the arm bearer is made of die-cast aluminium, powder coated, with integrated, infinitely variable pitch setting mechanism

Blind profiles

- extruded aluminium, in façade quality, powder coated
- cassette in two parts
- semi-circular front profile with integrated gutter

Folding arms

- profiles in extruded aluminium, in façade quality, powder coated
- moving parts made of drop-forged aluminium - the arms are therefore extremely fracture resistant
- pivot bolts in stainless steel run in Teflon-coated bronze bushes - practically maintenance free, virtually silent and extremely hard wearing
- power transference via corrosion-protected twin steel-link chains at the elbow joint, optionally with innovative bionic tendon made of high tensile, high-tech fibre – low in friction, noiseless, insensitive to corrosion and UV resistant

End caps

- the cassette insert sections are made of high-quality plastic, powder coated or in a polished chrome finish
- the front profile end caps are made of high-quality plastic, powder coated, with water drainage holes

Fixture brackets

- face fixture, top fixture, eaves fixture
- extruded aluminium, powder coated
- also available in individual widths (on request)
- pitch range 5°–35° (face fixture)
- 5°–70° (top or eaves fixture)
- spacer plates, stand-off brackets and other accessories are available

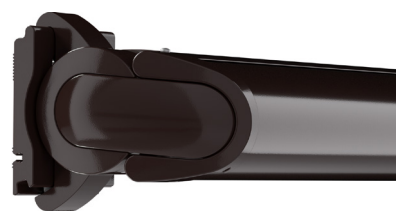
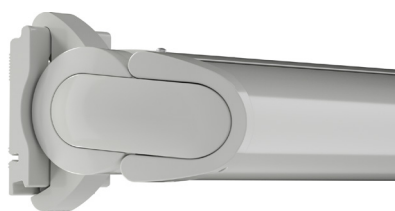
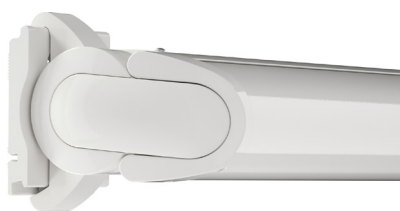
Frame and end cap colours

markilux frame colours without surcharge

traffic white, RAL 9016

metallic aluminium, RAL 9006

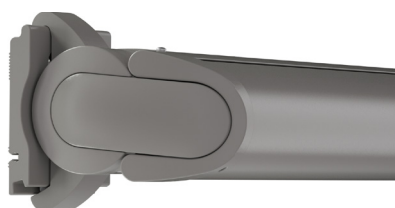
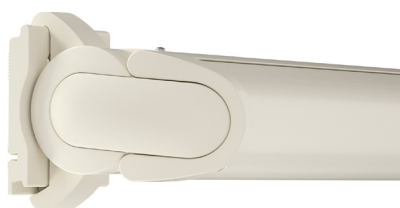
grey brown, similar to RAL 8019



off-white textured finish, 5233 ¹⁾

stone grey metallic, 5215 ¹⁾

anthracite metallic, 5204 ¹⁾



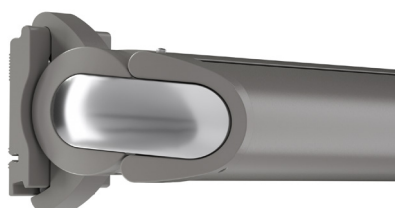
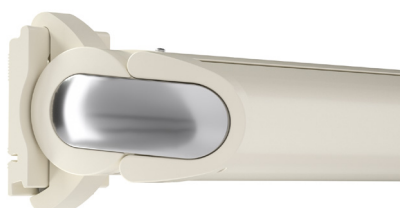
havana brown textured finish, 5229 ¹⁾



off-white textured finish, 5233 ¹⁾
end cap insert in polished chrome

stone grey metallic, 5215 ¹⁾
end cap insert in polished chrome

anthracite metallic, 5204 ¹⁾
end cap insert in polished chrome



Combination options – possible in any frame colour.

Non-standard powder-coated finish

Bespoke frame colours incur a surcharge – matt, metallic, finely textured and pearl finishes as well as other colour ranges (DB, Tiger etc.) on request. All frame colours are available at a surcharge with enhanced corrosion protection.

Colours may differ slightly from those depicted in both hue and finish.

¹⁾ textured finish

Dimensions and configuration options


Single unit

Order dimensions		Overall awning width						Minimum width	
		250	300	350	400	450	500	Motor	Crank handle
		179 250	251 300	301 350	351 400	401 450	451 500		
H	150	1) 250						179	179
	200	1) 250						229	229
	250	—	1) 300					279	279
	300	—	—	1) 350				329	329

dimensions in cm

1) = please note the minimum widths!

H = projection

 = 2 standard arms,
2 brackets

Operation

	standard	optional
crank handle	✓	—
spring-assisted crank handle	—	✓
hard-wired motor	—	✓
silentec motor (optionally with external radio receiver io / RTS)	—	—
radio-controlled motor io, 868 MHz	—	✓
radio-controlled motor RTS, 433 MHz	—	✓
868 MHz radio-controlled motor io with manual override	—	✓

Coupled awnings

not available

Awning cover

	fabric pattern no.	standard	optional
sunvas	300.. - 315..	✓	—
sunsilk	324.. / 328.. / 369..	✓	—
sunbow	411.. - 427..	✓	—
smart art	340..	—	✓
perla FR	371.. / 372..	—	✓
valance, height 20 cm		—	✓

Shadeplus

not available

Optional accessories

folding-arm technology with bionic tendon
valance
wall sealing profile, up to a pitch of 35°
infrared heater 2500 W
infrared heater 2500 W with integrated radio-controlled receiver 868 MHz io
LED spotline – light bar 110 × 70 mm with 5 W LED spotlights, 180 cm / 3 spots or 300 cm / 5 spots
LED spotline io – light bar 110 × 70 mm with 5 W LED spotlight-integrated dimmable radio-controlled receiver, width 180 cm / 3 spots or 300 cm / 5 spots
automatic controls (light, wind, rain)

N.B. Important background information can be found in the chapter “Optional Accessories”

Fixture options

face fixture bracket 150 mm	71624.
face fixture bracket 300 mm, left	70617.
face fixture bracket 300 mm, right	70600.
spreader plate A face fixture	75326.
spreader plate B face fixture	75325.
markilux panel 250 × 230 × 49 mm	76308.
markilux panel continuous	701104
Vertical fixture rail	62421.
stand-off bracket for face-fixture bracket 70617. und 70600.	77968.
top fixture bracket 150 mm	71625.
eaves fixture bracket 90 mm plate 150 mm plate	75889.
eaves fixture bracket 90 mm plate 270 mm plate	71659.
flat plate and angled bracket for eaves fixture, machine finish plate 500 mm	716620
spreader plate 260 × 60 × 12 mm	75383.

No. of brackets | No. of fixing points

		Overall awning width					
		250	300	350	400	450	500
Order dimensions		179	251	301	351	401	451
		250	300	350	400	450	500
		No. of brackets No. of fixing points					
W	BHT 15	2 6					
BP		A 2 16 B 2 8					
PA		2 8					
DA / DE	15	2 8					

dimensions in cm

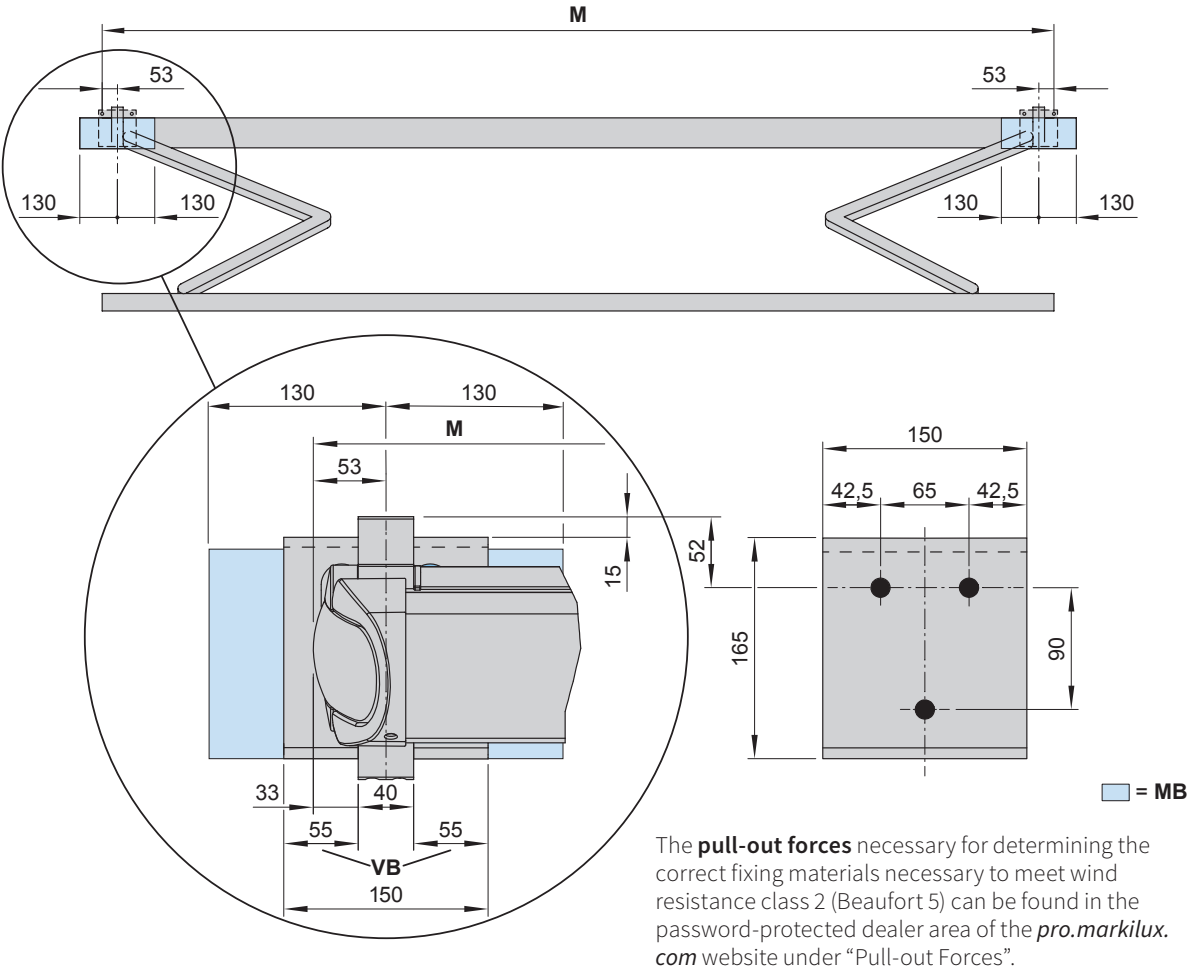
If the brackets cannot be positioned in accordance with this table, make sure the actual dimensions are noted on the order form.

The **pull-out forces** necessary for determining the correct fixing materials necessary to meet wind resistance class 2 (Beaufort 5) can be found in the password-protected dealer area of the pro.markilux.com website under “Pull-out Forces”.

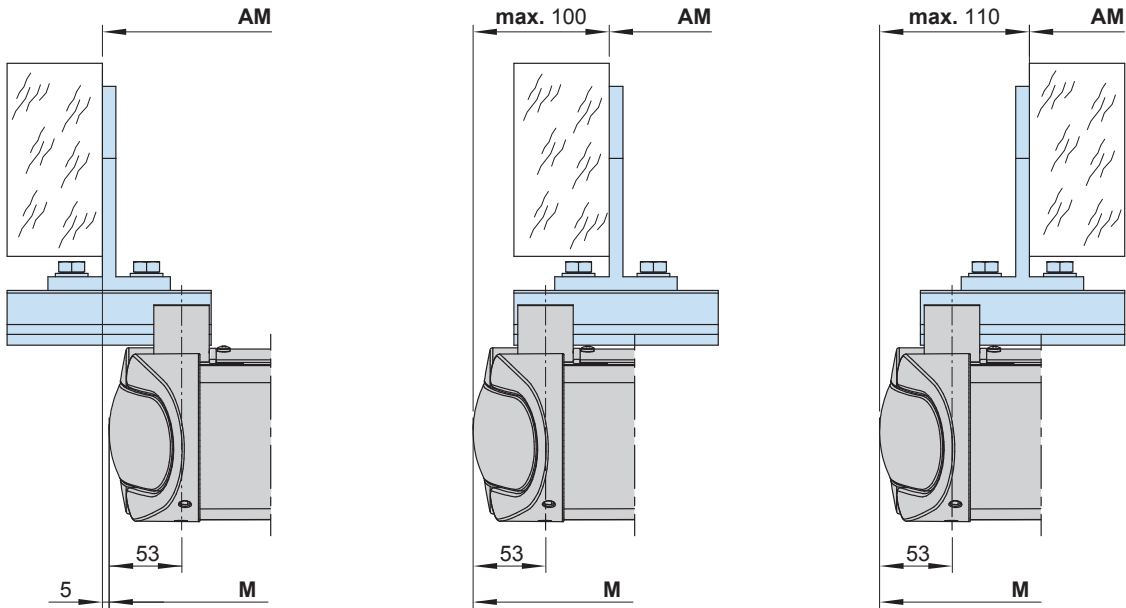
A	= arm position
BHT	= bracket width
BP	= spreader plate (A or B)
DA	= eaves fixture brackets
DE	= top fixture brackets
H	= order dimension = projection
M	= order dimension = awning width
PA	= markilux panel, fixture profile, width 250 mm
W	= face fixture brackets

Bracket fixture range

Face and top fixture



Eaves fixture

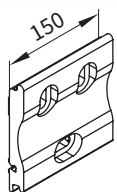


- AM = installation dimensions
- M = **order width** = awning width
- MB = bracket fixture range
- VB = adjustment range, face fixture bracket

dimensions in mm

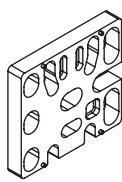
Face fixture

Fixtures, fittings and accessories



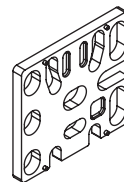
face fixture bracket
150 mm

71624.



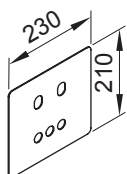
spacer plate
for face/top fixture
150x 136 x 20 mm; black
N.B!
stack to a max. height of
200 mm

716331



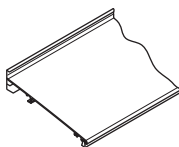
spacer plate for face
fixture
150 x 136 x 12 mm

71644.



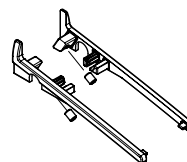
cover plate for spacer
plate and stand-off
brackets in the case of
external insulation
230 x 210 x 2 mm

71843.



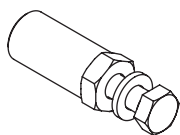
wall sealing profile
incl. brush seal
by the metre

76385. and 704241



side cover
wall sealing profile
left and right

60923. and 60924.

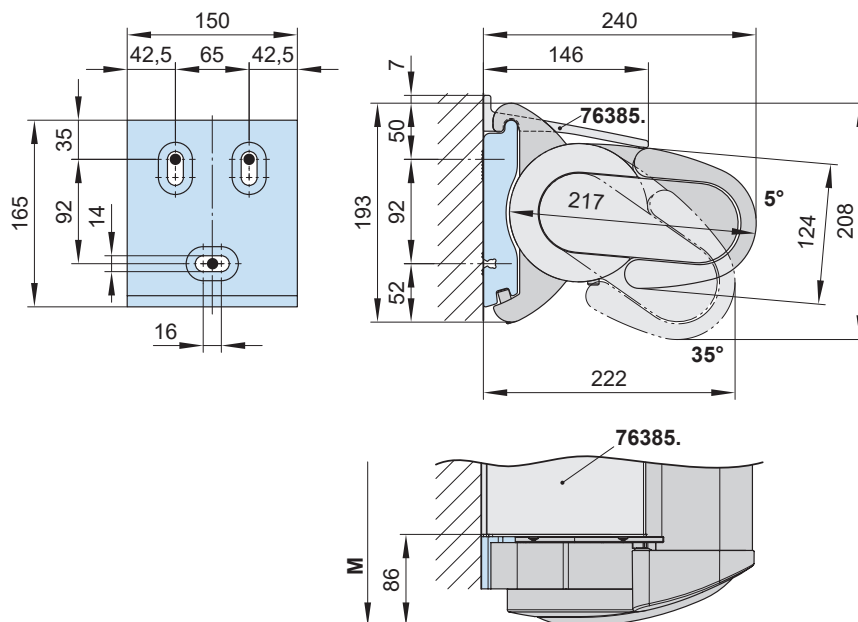


reduction bolt

pack 10 pcs

M 16 → M 12 | M 16 → M 10 | M 12 → M 10 | M 10 → M 10

The **pull-out forces** necessary for determining the correct fixing materials necessary to meet wind resistance class 2 (Beaufort 5) can be found in the password-protected dealer area of the pro.markilux.com website under "Pull-out Forces".

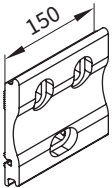
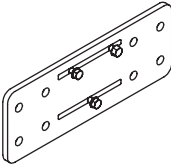
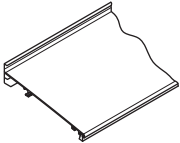
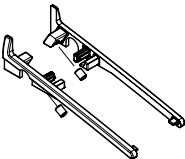
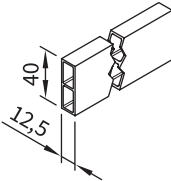
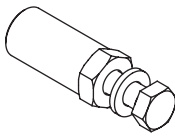


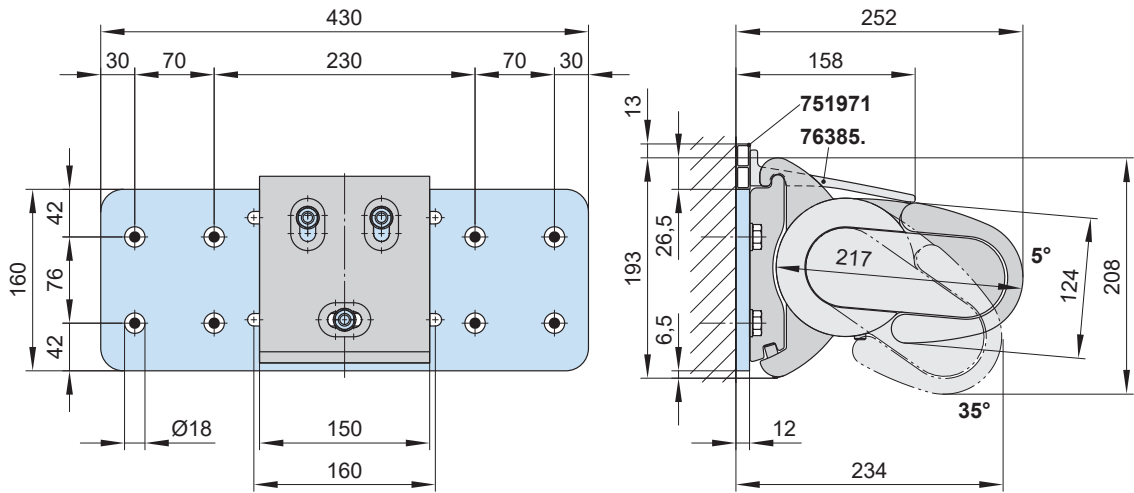
76385. = wall sealing profile (standard width = awning width (**M**) – 168 mm;
up to a maximum awning pitch of 35°)

dimensions in mm

Face fixture with spreader plate A

Fixtures, fittings and accessories

 <p>face fixture bracket 150 mm</p> <p>71624.</p>	 <p>spreader plate A face fixture 430 × 160 × 12 mm</p> <p>75326.</p>	 <p>wall sealing profile incl. brush seal by the metre</p> <p>76385. and 704241</p>
 <p>side cover wall sealing profile left and right</p> <p>60923. and 60924.</p>	 <p>stand-off strip for wall sealing by the metre</p> <p>751971</p>	 <p>reduction bolt pack 10 pcs</p> <p>M 16 → M 12 M 16 → M 10 M 12 → M 10 M 10 → M 10</p>

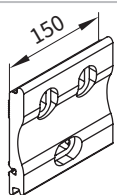


751971 = stand-off strip for wall sealing profile
76385. = wall sealing profile (standard width = awning width (M) – 168 mm;
up to a maximum awning pitch of 35°)

dimensions in mm

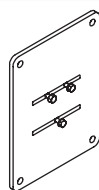
Face fixture with spreader plate B

Fixtures, fittings and accessories



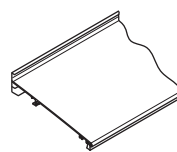
face fixture bracket
150 mm

71624.



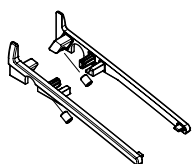
spreader plate B face
fixture
300 × 400 × 12 mm

75325.



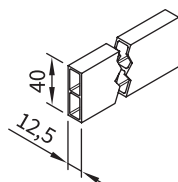
wall sealing profile
incl. brush seal
by the metre

76385. and 704241



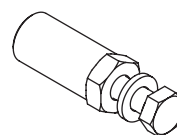
side cover
wall sealing profile
left and right

60923. and 60924.



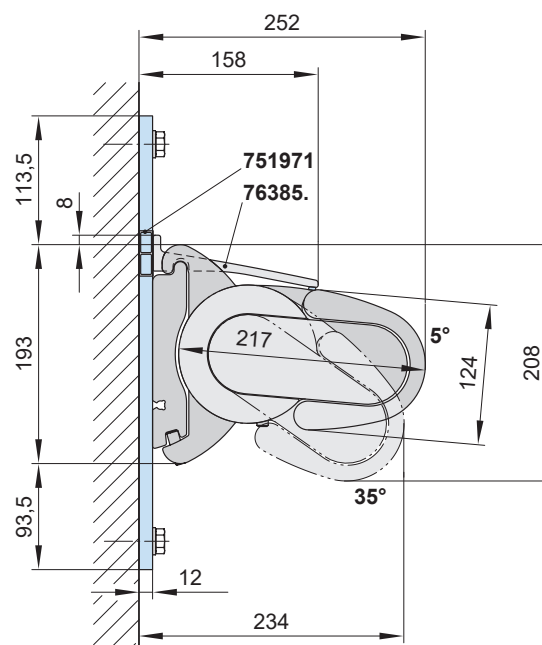
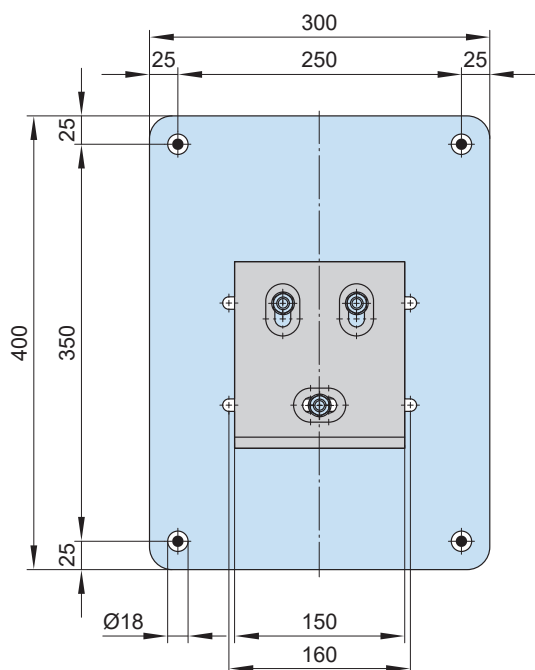
stand-off strip
for wall sealing
by the metre

751971



reduction bolt
pack 10 pcs

M 16 → M 12 | M 16 → M 10 | M 12 → M 10 | M 10 → M 10

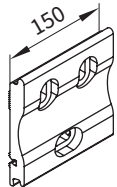


- 751971** = stand-off strip for wall sealing profile
76385. = wall sealing profile (standard width = awning width (M) – 168 mm;
 up to a maximum awning pitch of 35°)

dimensions in mm

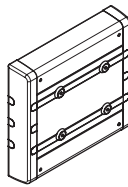
Face fixture using the markilux panel 250 mm wide

Fixtures, fittings and accessories



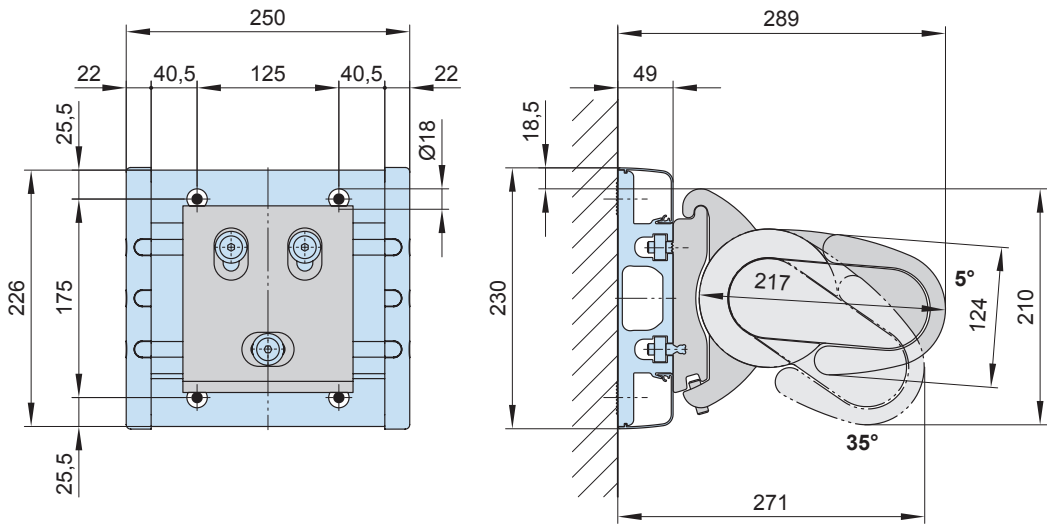
face fixture bracket
150 mm

71624.



markilux panel
250 × 230 × 49 mm
with decorative profiles
and end caps

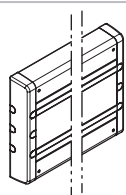
76308.



dimensions in mm

Continuous face fixture using the markilux panel

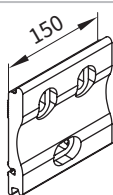
Fixtures, fittings and accessories



markilux panel
continuous

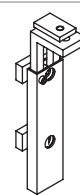
with decorative profiles
and end caps

701104



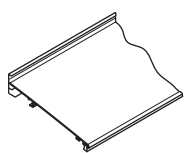
face fixture bracket
150 mm

71624.



bracket
for wall sealing profile

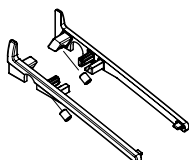
76387.



wall sealing profile
incl. brush seal

by the metre

76385. and 704241



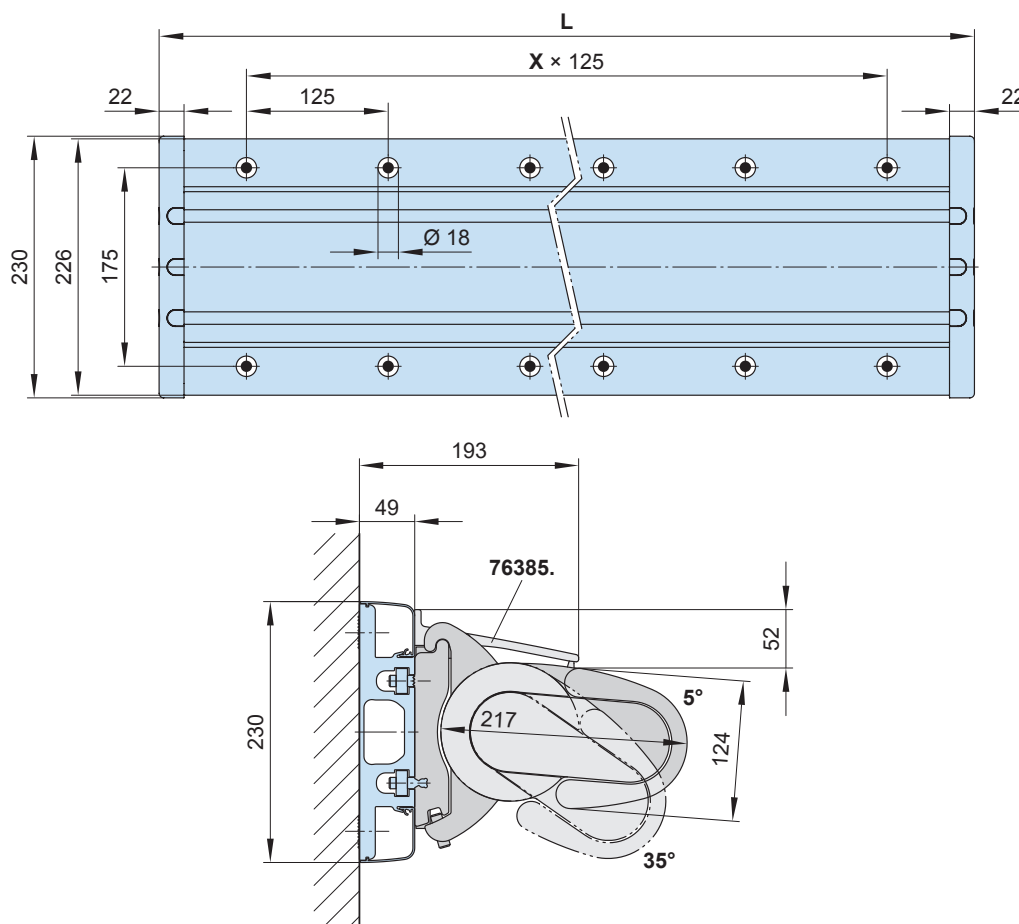
side cover
wall sealing profile

left and right

60923. and 60924.

As a **continuous fixture profile**, the markilux panel will always be supplied to order on the basis of a technical drawing prepared in the factory in accordance with the awning specification.

The technical drawing shows the fixture points and pull-out forces and must be approved in writing.



76385. = wall sealing profile (standard width = **M** – 168 mm; up to a maximum awning pitch of 35°)


L = individual width, max. 7000 mm, (standard **L** = **M** + 20 mm)

X = fixing point separation, by way of example

dimensions in mm

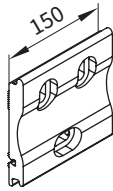
Face fixture with vertical fixture rail

Fixtures, fittings and accessories



vertical fixture rail
incl. fixing material
624291

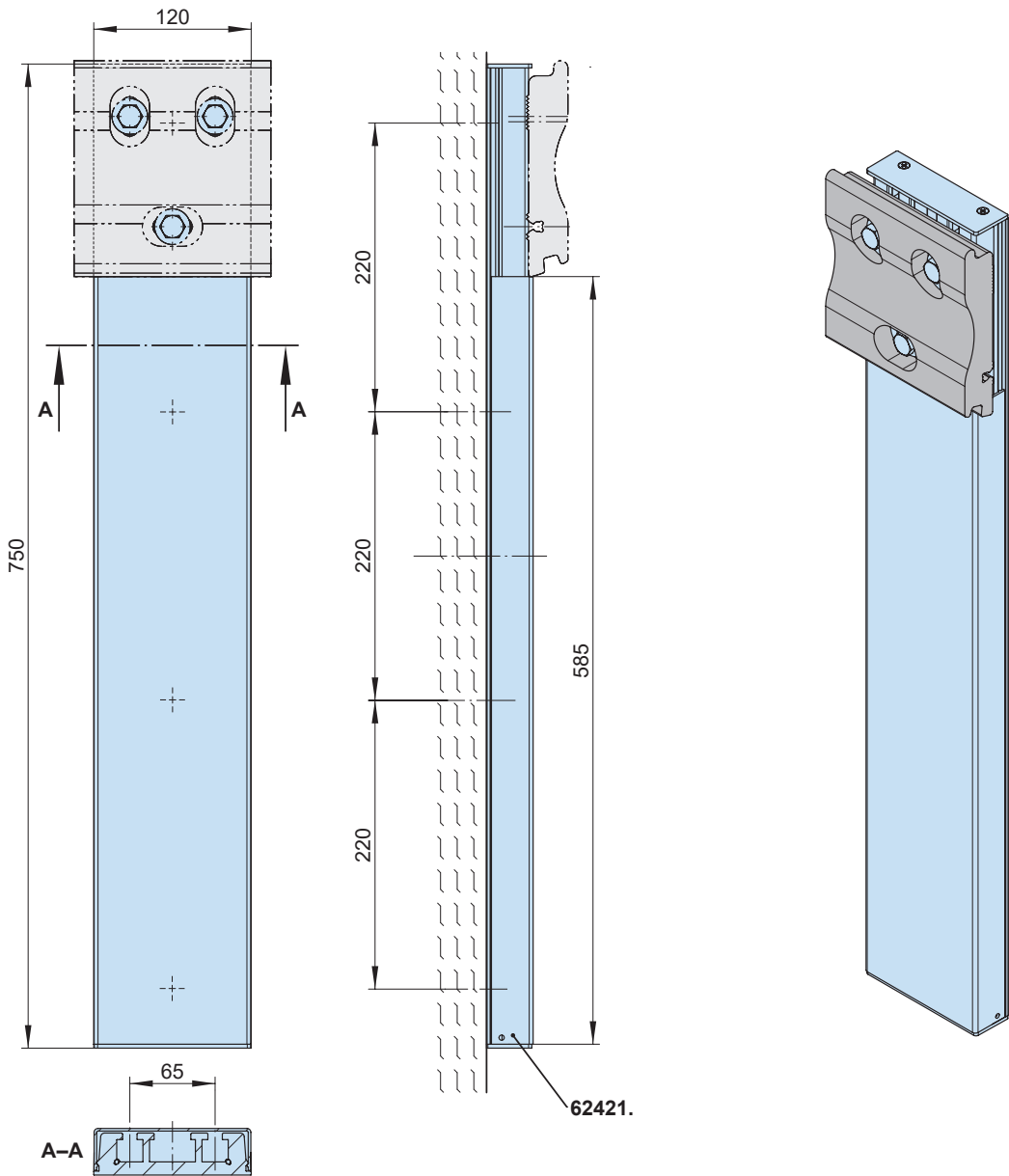
62421.



face fixture bracket
150 mm

71624.

Note: The fixture rail has to be installed with all four of the provided fixtures. The top fixture point has to be exactly behind the awning fixture bracket. The pull-out forces as listed in the separate documentation at pro.markilux.com must be observed!

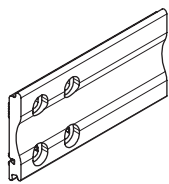


62421. = vertical fixture rail

dimensions in mm

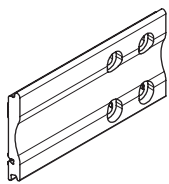
Face fixture with stand-off bracket

Fixtures, fittings and accessories



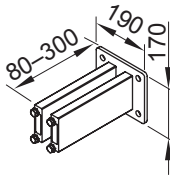
face fixture bracket
300 mm, left

70617.



face fixture bracket
300 mm, right

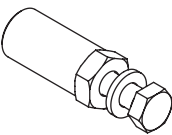
70600.



Stand-off bracket
for face fixture bracket
70617. and 70600.

80-300 mm
incl. insulating element

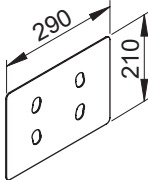
77968.



reduction bolt

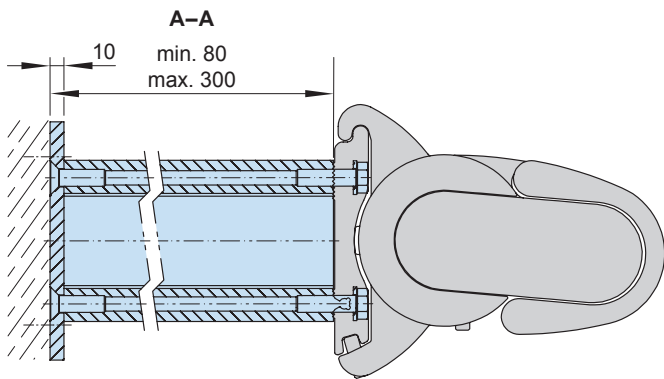
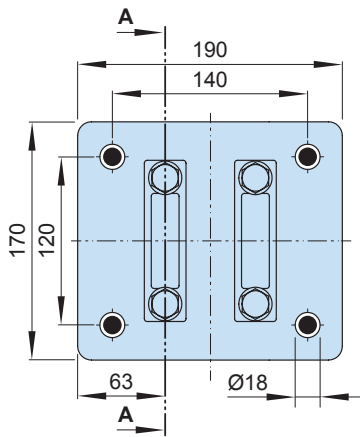
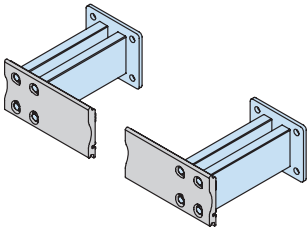
pack 10 pcs

M 16 → M 12 | M 16 → M 10 | M 12 → M 10 | M 10 → M 10



cover plate for spacer
plate and stand-off
brackets in the case of
external insulation
290 × 210 × 2 mm

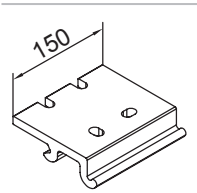
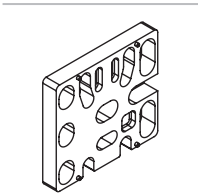
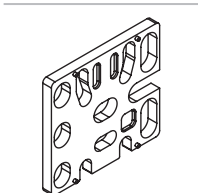
71841.

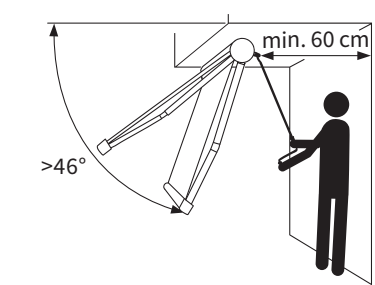


dimensions in mm

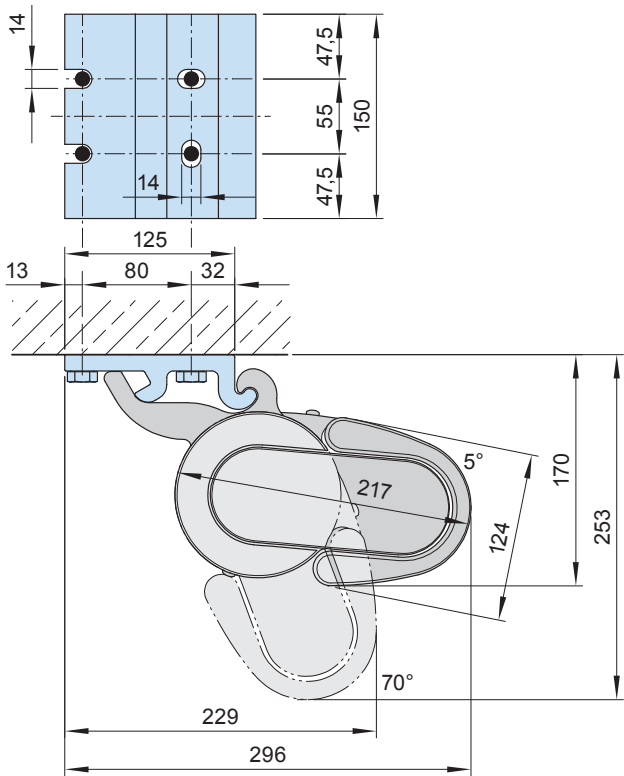
Top fixture

Fixtures, fittings and accessories

 <p>top fixture bracket 150 mm</p> <p>71625.</p>	 <p>spacer plate for face/top fixture</p> <p>150x 136 x 20 mm; black</p> <p>N.B.! stack to a max. height of 200 mm</p> <p>716331</p>	 <p>spacer plate for face fixture</p> <p>150 x 136 x 12 mm</p> <p>71644.</p>
---	--	---

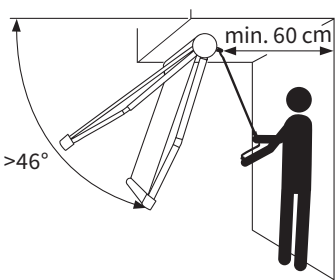
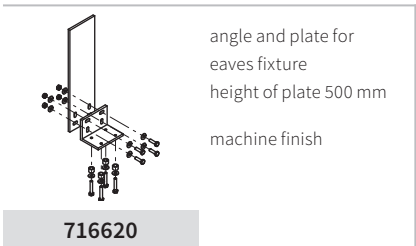
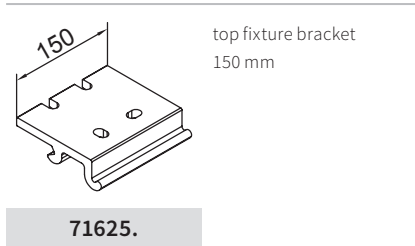
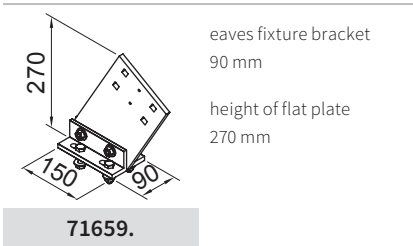
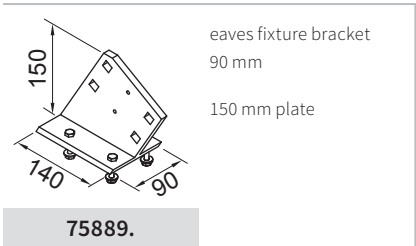


N.B.! At a pitch of more than 46° to the horizontal there must be an accessible area behind the awning at least 60 cm deep to allow manual operation incl. operation via radio-controlled motor with manual override. There are no limitations with motor systems.



Eaves fixture

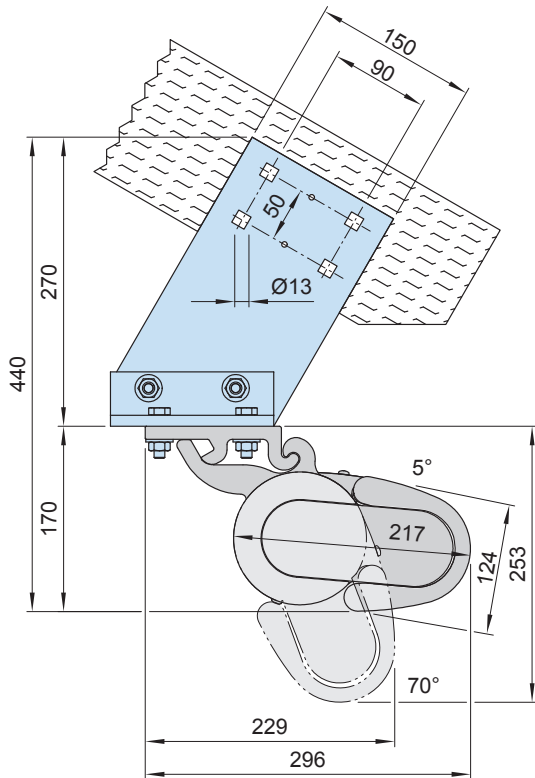
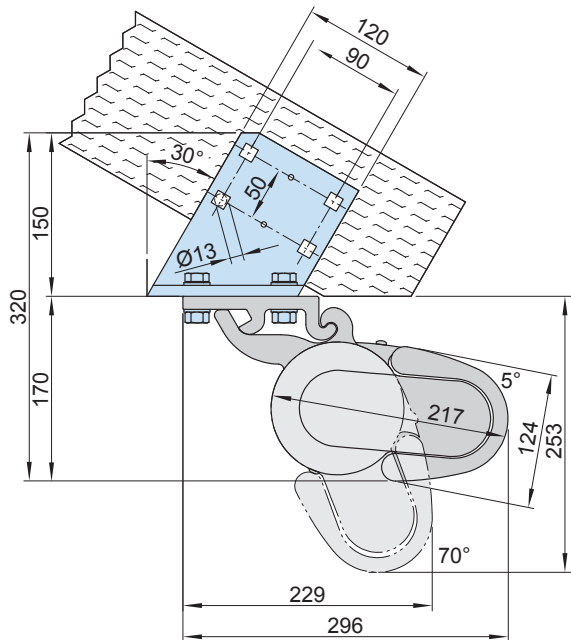
Fixtures, fittings and accessories



N.B.! At a pitch of more than 46° to the horizontal there must be an accessible area behind the awning at least 60 cm deep to allow manual operation incl. operation via radio-controlled motor with manual override. There are no limitations with motor systems.

Eaves fixture bracket 150 mm (75889.)

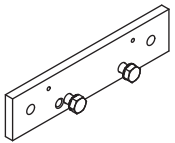
Eaves fixture bracket 270 mm (71659.)



dimensions in mm

Eaves fixture with additional plate

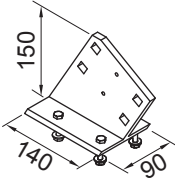
Fixtures, fittings and accessories



supplementary flat plate
for eaves fixture

260 × 60 × 12 mm

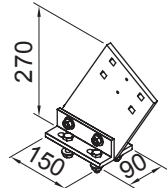
75383.



eaves fixture bracket
90 mm

150 mm plate

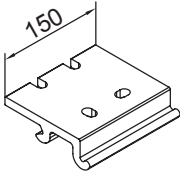
75889.



eaves fixture bracket
90 mm

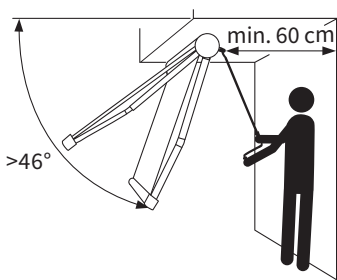
height of flat plate
270 mm

71659.



top fixture bracket
150 mm

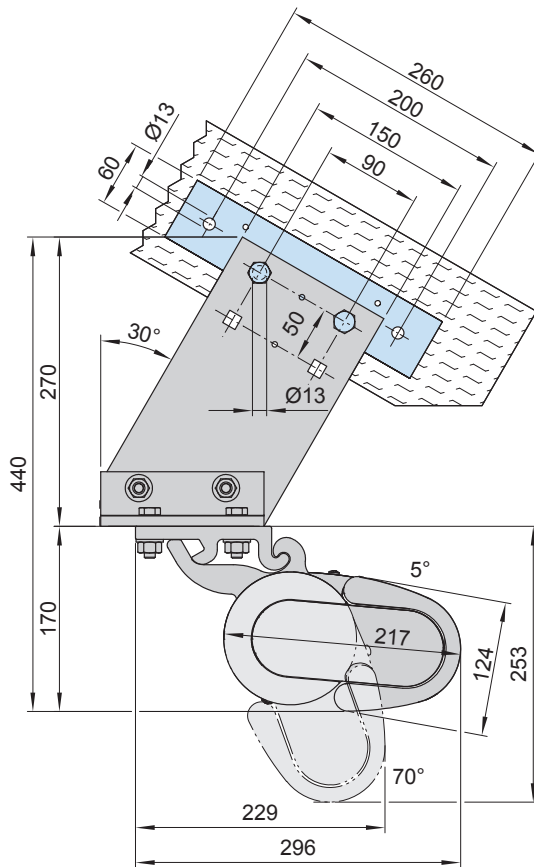
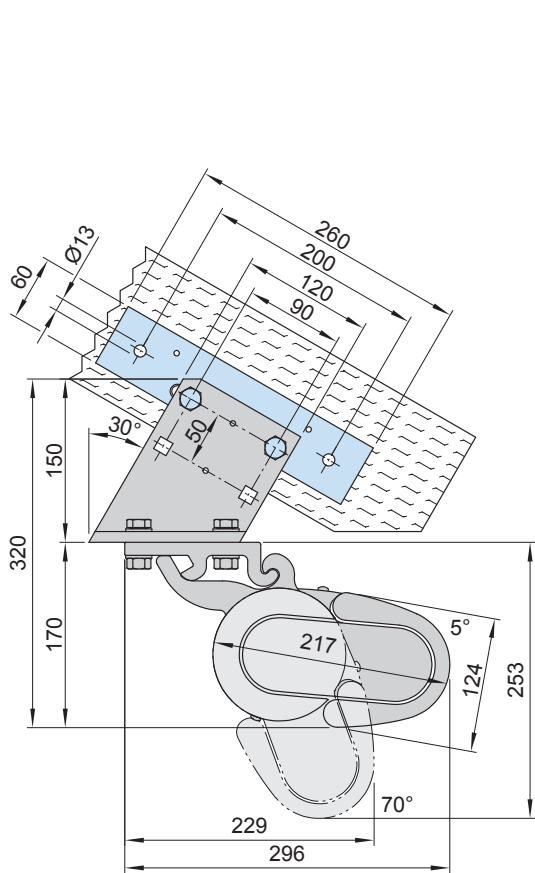
71625.



N.B.! At a pitch of more than 46° to the horizontal there must be an accessible area behind the awning at least 60 cm deep to allow manual operation incl. operation via radio-controlled motor with manual override. There are no limitations with motor systems.

Eaves fixture bracket with backing plate for 75889.

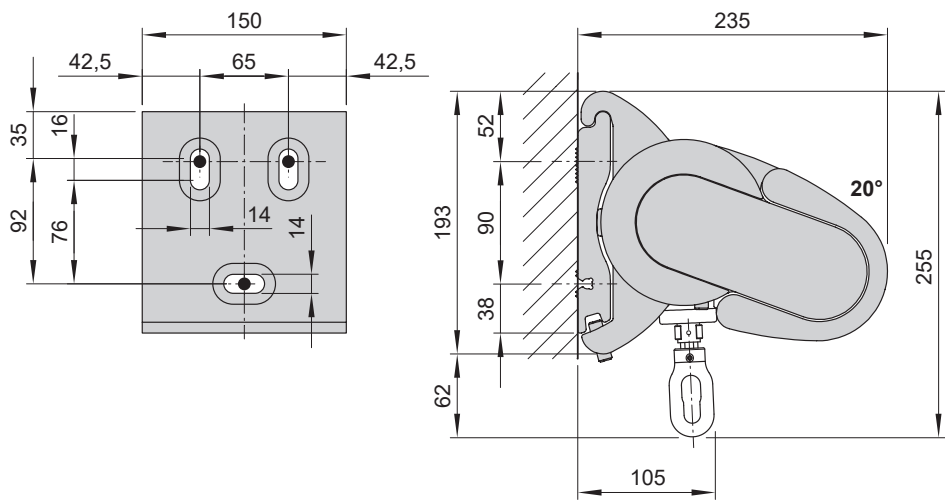
Eaves fixture bracket with backing plate for 71659.



dimensions in mm

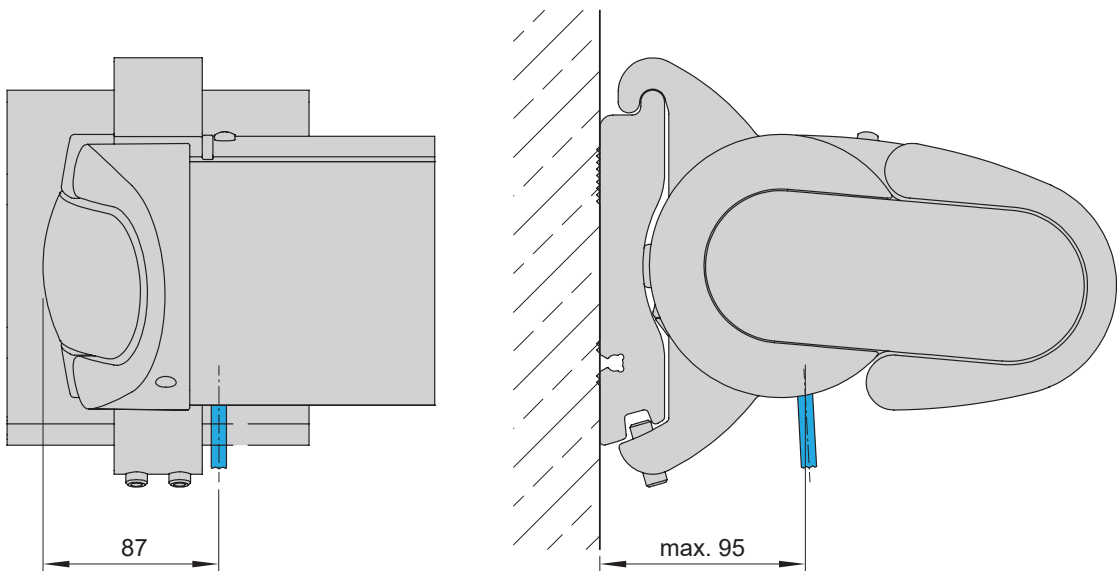
Face fixture, manual operation

Lateral view



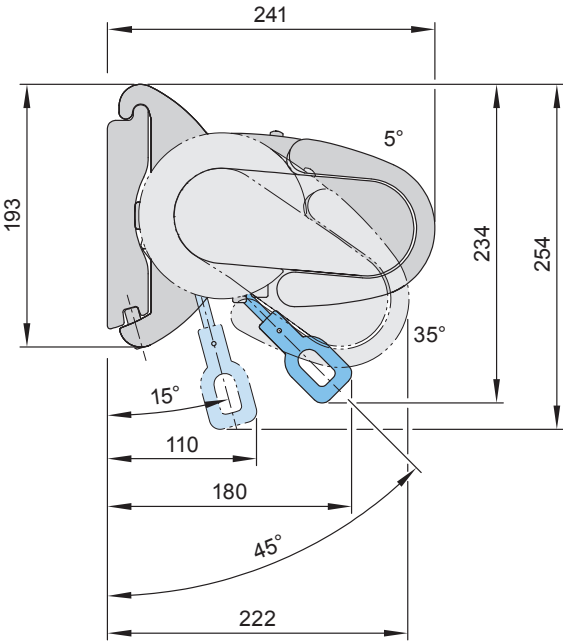
dimensions in mm

Motor cable exit point



dimensions in mm

Face fixture, radio-controlled motor with manual override



- 01
- 02
- 03
- 04
- 05
- 06
- 07
- 08
- 09
- 10
- 11**
- 12
- 13
- 14
- 15
- 16
- 17
- 18
- 19

dimensions in mm

- 01
- 02
- 03
- 04
- 05
- 06
- 07
- 08
- 09
- 10
- 11**
- 12
- 13
- 14
- 15
- 16
- 17
- 18
- 19